

Appalachian Blue Violet Earring

By Bead Soup 2025



Supplies

6lb Fireline or equivalent
OneG or equivalent if creating fringe
Size 12 beading needle
2-Ear wires-shown are silver plated fishhooks
2-wire guards or seed beads to make loop to hang ear wire

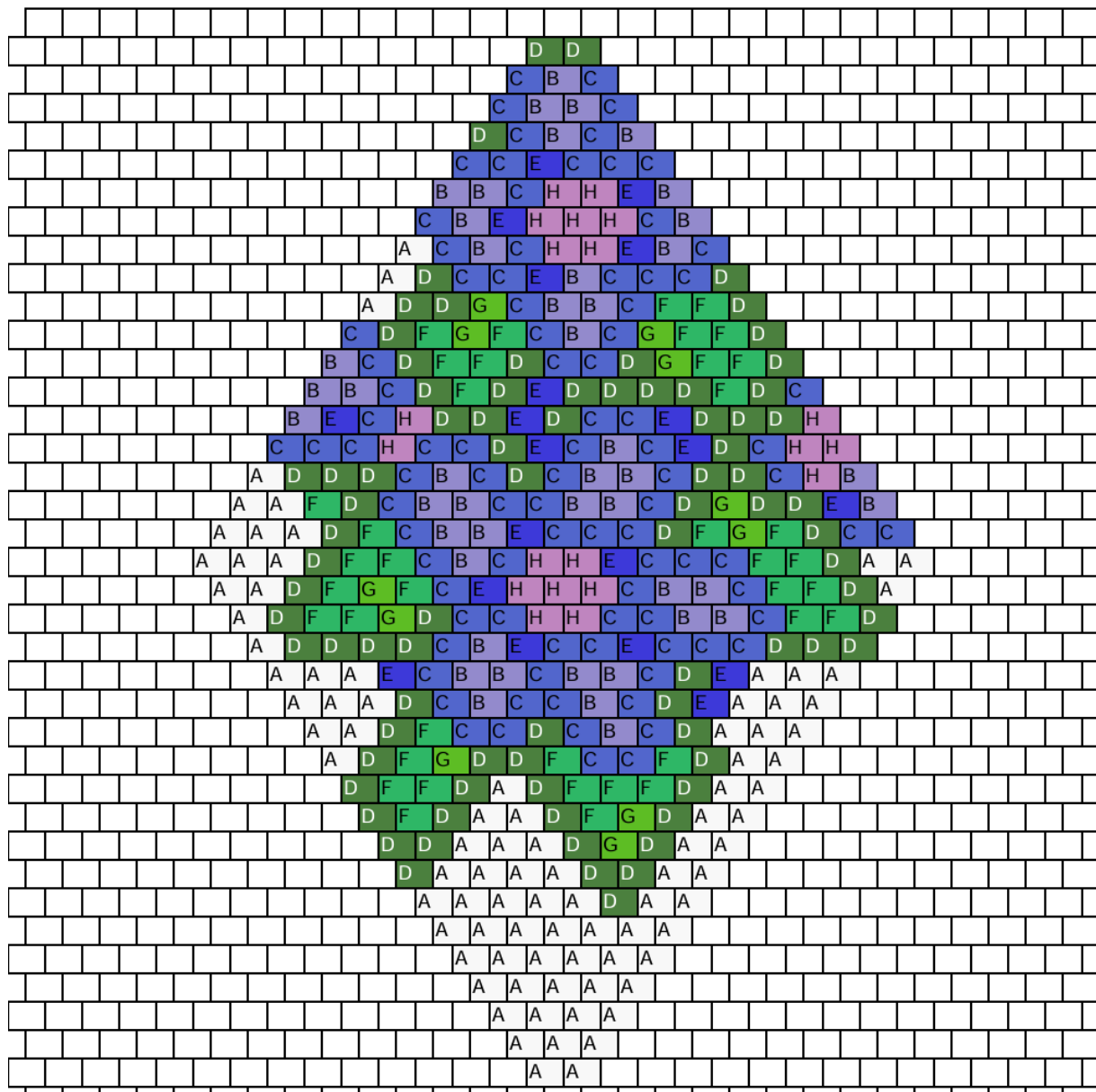
Appalachian blue violets grow in serpentine barrens and rich forests in the southern Appalachian Mountains. It has only been found in Pennsylvania, West Virginia, Maryland, and North Carolina.

Fringe-optional

1g size 15/0 seed beads-mine matched DB109
Misc drops to use as accents-3 different sizes are shown in the picture

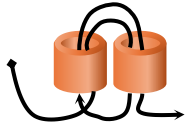
Bead List

Bead Symbol	Bead	Count
DB109		182
DB783		90
DB2359		180
DB656		164
DB610		40
DB705		78
DB1207		22
DB72		40



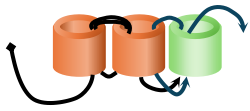
Row 2 (R) (2)D
Row 3 (L) (1)C, (1)B, (1)C
Row 4 (R) (1)C, (2)B, (1)C
Row 5 (L) (1)B, (1)C, (1)B, (1)C, (1)D
Row 6 (R) (2)C, (1)E, (3)C
Row 7 (L) (1)B, (1)E, (2)H, (1)C, (2)B
Row 8 (R) (1)C, (1)B, (1)E, (3)H, (1)C, (1)B
Row 9 (L) (1)C, (1)B, (1)E, (2)H, (1)C, (1)B, (1)C, (1)A
Row 10 (R) (1)A, (1)D, (2)C, (1)E, (1)B, (3)C, (1)D
Row 11 (L) (1)D, (2)F, (1)C, (2)B, (1)C, (1)G, (2)D, (1)A
Row 12 (R) (1)C, (1)D, (1)F, (1)G, (1)F, (1)C, (1)B, (1)C, (1)G, (2)F, (1)D
Row 13 (L) (1)D, (2)F, (1)G, (1)D, (2)C, (1)D, (2)F, (1)D, (1)C, (1)B
Row 14 (R) (2)B, (1)C, (1)D, (1)F, (1)D, (1)E, (4)D, (1)F, (1)D, (1)C
Row 15 (L) (1)H, (3)D, (1)E, (2)C, (1)D, (1)E, (2)D, (1)H, (1)C, (1)E, (1)B
Row 16 (R) (3)C, (1)H, (2)C, (1)D, (1)E, (1)C, (1)B, (1)C, (1)E, (1)D, (1)C, (2)H
Row 17 (L) (1)B, (1)H, (1)C, (2)D, (1)C, (2)B, (1)C, (1)D, (1)C, (1)B, (1)C, (3)D, (1)A
Row 18 (R) (2)A, (1)F, (1)D, (1)C, (2)B, (2)C, (2)B, (1)C, (1)D, (1)G, (2)D, (1)E, (1)B
Row 19 (L) (2)C, (1)D, (1)F, (1)G, (1)F, (1)D, (3)C, (1)E, (2)B, (1)C, (1)F, (1)D, (3)A
Row 20 (R) (3)A, (1)D, (2)F, (1)C, (1)B, (1)C, (2)H, (1)E, (3)C, (2)F, (1)D, (2)A
Row 21 (L) (1)A, (1)D, (2)F, (1)C, (2)B, (1)C, (3)H, (1)E, (1)C, (1)F, (1)G, (1)F, (1)D, (2)A
Row 22 (R) (1)A, (1)D, (2)F, (1)G, (1)D, (2)C, (2)H, (2)C, (2)B, (1)C, (2)F, (1)D
Row 23 (L) (3)D, (3)C, (1)E, (2)C, (1)E, (1)B, (1)C, (4)D, (1)A
Row 24 (R) (3)A, (1)E, (1)C, (2)B, (1)C, (2)B, (1)C, (1)D, (1)E, (3)A
Row 25 (L) (3)A, (1)E, (1)D, (1)C, (1)B, (2)C, (1)B, (1)C, (1)D, (3)A
Row 26 (R) (2)A, (1)D, (1)F, (2)C, (1)D, (1)C, (1)B, (1)C, (1)D, (3)A
Row 27 (L) (2)A, (1)D, (1)F, (2)C, (1)F, (2)D, (1)G, (1)F, (1)D, (1)A
Row 28 (R) (1)D, (2)F, (1)D, (1)A, (1)D, (3)F, (1)D, (2)A
Row 29 (L) (2)A, (1)D, (1)G, (1)F, (1)D, (2)A, (1)D, (1)F, (1)D
Row 30 (R) (2)D, (3)A, (1)D, (1)G, (1)D, (2)A
Row 31 (L) (2)A, (2)D, (4)A, (1)D
Row 32 (R) (5)A, (1)D, (2)A
Row 33 (L) (7)A
Row 34 (R) (6)A
Row 35 (L) (5)A
Row 36 (R) (4)A
Row 37 (L) (3)A
Row 38 (R) (2)A

Brick Stitch Tutorial

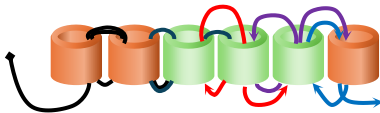


Brick stitch starts by making a ladder of beads which corresponds to the longest row in the pattern.

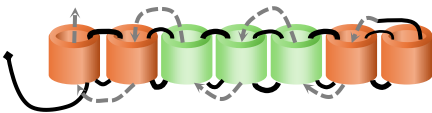
Step 1—Thread a needle with a comfortable working length of fireline. Pick up the 1st 2 beads in the row. Slide down leaving enough of a tail to weave in. Go through the 1st bead from the tail side. Manipulate the beads to sit side by side. Go through the 2nd bead.



Step 2—Pick up the next bead in row. Go through the previous bead in the ladder opposite the side the thread is exiting. Continue through the new bead. Pull snug seating this bead beside the previous bead.

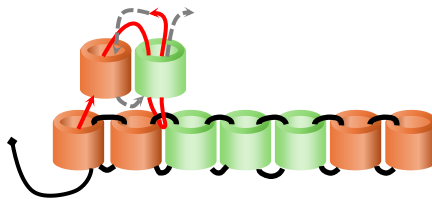


Step 3—Repeat step 2 as many times as needed to complete the row.



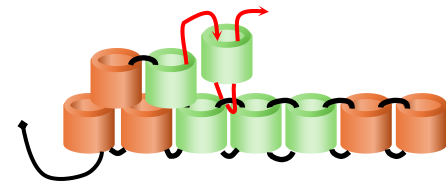
Step 4—Reinforce the ladder by weaving back through all the beads.

Brick stitch decrease at the beginning of a row:

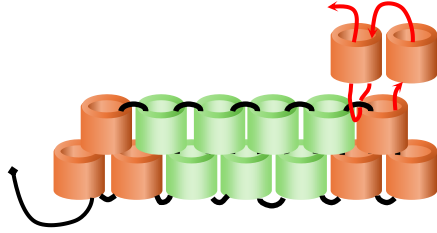


through the 2nd bead to pull it into line.

Pick up 2 beads according to the pattern. Weave under the 2nd thread bridge. Go back through the 2nd bead added. Pull the thread snug. Situate the 2 beads to sit side by side on top of the previous row. If the end bead is not sitting correctly go through the 1st bead and then back

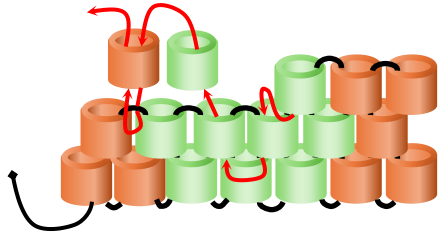


Pick up the next bead in the row. Go under the next thread bridge in the previous row. Repeat this step to complete the row.



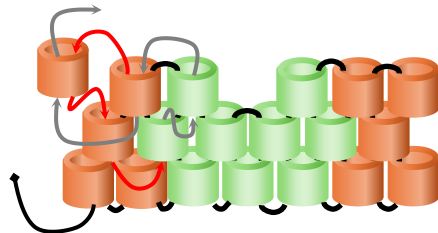
Increase at the beginning of a row:

Pick up 2 beads according to the pattern. Go under the 1st thread bridge in the previous row. Go through the 2nd bead and pull snug.



Moving through the beads to create a gap:

Weave through the beads in previous rows on a diagonal. Turn and weave through beads on a diagonal to emerge where the row will resume. Start the row by picking up 2 beads.



Increasing a row:

Pick up the next bead in the pattern. Go through the edge bead in the previous row. Turn, going through the adjacent bead in the previous row. Go up through the bead before the bead the thread started in. Go through the bead the thread started in. Turn and go through the

bead just added.

Adding the fringe is optional-pictured are a total of 5 fringes

Weave in a new thread using OneG or a thread that is equivalent. Fireline will not work because you want your fringe to sway. Weave in your thread so that it is secure. Exit one of the two bottom Delicas. String (12) size 15/0's, (1) drop and (3) 15/0's. Skip (3) size 15/0's and pass your needle through the remaining (9) size 15/0's. Pass through the Delica and then down through the other Delica. Repeat the same sequence. Pass your needle down through the first Delica. Repeat the same sequence but add (15) size 15/0 seed beads.

There is only one fringe for the middle. This time use (20) size 15/0 seed beads

***Do not pull your thread too tightly. This could cause the fringe to kink.

Adding Ear Wire or Seed Beads

Adding a wire guard to secure the ear wire. Thread needs to exit the top Delica. Weave the thread through the wire guard and then through the Delicas to secure. Repeat and trim thread

You can also add seed beads to create a loop to hang your ear wire. Exit the top Delica and string (10) size 15 seed beads and pass the needle down through the adjacent Delica. Weave your thread to secure and clip excess threads after secure.