

Corinne

Design by Nancy Jenner
© 2024

This IBW pattern is for personal use only. Items made from this pattern may be gifted but cannot be sold.



Materials:

- **A** = 11/0 seed beads for **dress** – SEE NOTES BELOW: 7.5 grams
- **B** = 11/0 seed beads for **skin**: 3.5 grams (use same brand beads as dress and hat)
- **C** = 11/0 seed bead for **mouth**: 1 bead
- **D** = 11/0 seed beads for **cheeks**: 8 beads
- **E** = 8/0 seed beads for **eyes**: 2 beads
- **F** = 11/0 seed beads for **hair**: 1 gram
- **G** = 11/0 seed beads for **hat**: 4 grams (use same brand beads as dress and skin)
- US quarter or British ten pence or similar sized coin (15/16" = 2.4 cm diameter)
- Cotton balls or other stuffing material
- 6# Fireline or your preferred thread
- Size 11 needle and other standard beading equipment

PLEASE READ:

1. If using Toho brand seed beads for the dress and skin, your Corinne will be plump. If using Miyuki brand seed beads for the dress and skin, she will be thinner. (Miyuki seed beads tend to be narrower than Toho seed beads.)
2. **Use the same brand of beads for the dress, hat, and skin.** (If mixing brands, the hat may not fit the head because of differences in bead thickness between brands.)
3. The pattern is for a single-color dress and a single-color hat.
4. If using a light skin color bead, I recommend using Crystal Fireline or a beige beading thread for the head. Smoke Fireline or other dark thread will make light beads appear darker.

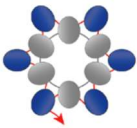
Dress:

- **Keep your work as flat as possible through Row 13.**
- **While beading the first 13 rows, it may be helpful to count out the beads prior to beading each row.**
- **It's easier to bead the first two rows if the thread tension is somewhat loose.**
- **When adding a new thread, start the new thread exactly where the previous thread ends.**

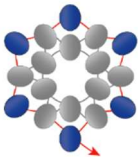
Row 1: Using 11/0 beads of dress color (A), string 6 beads on a comfortable length of thread, leaving a 6-7" tail thread.
Sew through all 6 beads + 2 beads to create a circle.



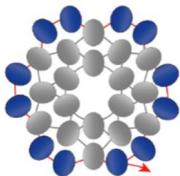
Row 2: Working in peyote, add 1A bead between each bead, step up = 6 beads.



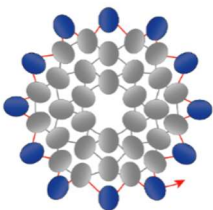
Row 3: Peyote 1A bead between each bead, step up = 6 beads.



Row 4: (String 2 A beads to an create increase, go through the next bead added in the previous row.) Repeat 5 times, step up into the first bead of the first pair added = 12 beads.



Row 5: Peyote 1A bead between each bead and pair of beads added in previous row, step up = 12 beads.



Row 6: Peyote 1A bead between each bead, step up = 12 beads.

→ **Continue using dress color A through Row 37.**

Row 7: (String 1 bead, go through the next bead. String 2 beads, go through the next bead.) Repeat 5 times, step up = 18 beads.

Row 8: Peyote 1 bead between each bead and pair of beads, step up = 18 beads.

Row 9: Peyote 1 bead between each bead, step up = 18 beads.

Row 10: (String 2 beads, go through the next bead. Peyote 1 bead in each of the next 2 spaces.) Repeat 5 times, step up into the first bead of the first pair added = 24 beads.

→ The increases in Rows 7, 10, and 13 occur directly above the increases in Row 4. The green beads in the photo below show the increases.

Row 11: Peyote 1 bead between each bead and pair of beads, step up = 24 beads.

Row 12: Peyote 1 bead between each bead, step up = 24 beads.

Row 13: (Peyote 1 bead in each of next 3 spaces. String 2 beads, go through the next bead.) Repeat 5 times, step up = 30 beads.

→ Secure and weave in the tail thread.

→ Place the coin on top of the hexagon. Hold the coin in place between your thumb and finger through Row 15. This will help keep the base flat while the edges of the body curve up.

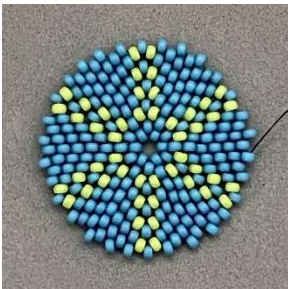


Photo: The green beads show the increases in Rows 4, 7, 10, and 13.

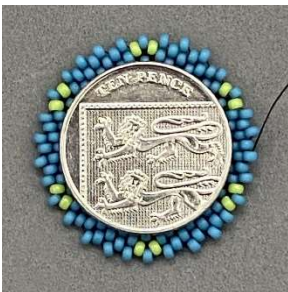


Photo: The coin sits just below the increases in Row 13.

Row 14: Peyote 1 bead between each bead and pair of beads, step up = 30 beads.

Row 15: Peyote 1 bead between each bead, step up = 30 beads.

Row 16: Peyote 2, *(Go through the next bead without adding a bead to create a decrease, peyote 4 single beads). Repeat from * 4 times, decrease, peyote 2, step up = 24 beads.

Row 17: Peyote 1 bead between each bead and over each gap created by the decreases in the previous row, step up = 24 beads.

→ On this row, gently pull the thread to close the gaps created by the six decreases in Row 16.

Row 18: Peyote 24, step up.

Row 19: Peyote 4, decrease, peyote 11, decrease, peyote 7, step up = 22 beads.

→ **The decreases in Rows 19, 22, 25, 28, 31, and 34 will occur only on the sides of the dress, which causes the dress shape to switch from a round to an oval shape.**

Row 20: Peyote 22, step up.

→ **Add stuffing on top of the coin. Use an awl or similar object to manipulate the stuffing evenly.**

Row 21: Peyote 22, step up.

Row 22: Peyote 2, decrease, peyote 10, decrease, peyote 8, step up = 20 beads.

Row 23: Peyote 20, step up.

Row 24: Peyote 20, step up.

Row 25: Go through the next bead without adding a bead to create a decrease, peyote 9, decrease, peyote 9, step up into the first bead after the decrease = 18 beads.

Row 26: Peyote 18, step up.

Row 27: Peyote 18, step up.

Row 28: Peyote 7, decrease, peyote 8, decrease, peyote 1, step up = 16 beads.

Row 29: Peyote 16, step up.

Row 30: Peyote 16, step up.

→ **Add more stuffing.**

Row 31: Peyote 5, decrease, peyote 7, decrease, peyote 2, step up = 14 beads.

Row 32: Peyote 14, step up.

Row 33: Peyote 14, step up.

Row 34: Peyote 3, decrease, peyote 6, decrease, peyote 3, step up = 12 beads.

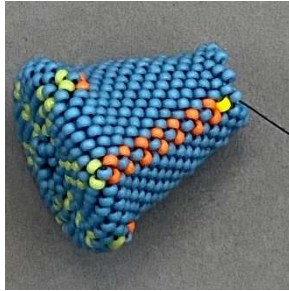
Row 35: Peyote 12, step up.

Row 36: Peyote 12, step up.

Row 37: Peyote 12, step up.

→ **Add stuffing to fill the remaining space.**

→ **Depending on how much thread is left on your needle, either weave over 3 “up” beads, exiting the side bead of Row 37, or add a new thread. Refer to my comment on page 1 about thread color for skin beads.**



Left: Row 37 complete. **Right:** Thread exiting the side bead.

Head:

Row 1: Exiting the dress side bead in Row 37 and beading toward the back side of the dress, peyote 12B (skin color), step up.

Row 2: Peyote 12B, step up.

Row 3: Peyote 12B, step up.

Row 4: Peyote 1B, string 2 B beads and then go through the next bead to create an increase, peyote 2B, increase with 2 B beads, peyote 2B, increase with 2 B beads, peyote 1B, step up = 16 beads.

→ These four increases in Row 4 occur at the back of the head, right side of the head, front of the head, and left side of the head.



Photo: Row 4 with increases, complete. Increases are shown with brown beads.

Row 5: Peyote 16B, step up.

Row 6: Peyote 3B, increase with 2 B beads, peyote 2B, increase with 2 B beads, peyote 4B, increase with 2 B beads, peyote 2B, increase with 2 B beads, peyote 1B, step up = 20 beads.



Photo: Row 6 with increases, complete. Increases are shown with brown beads.

Row 7: Peyote 10B, 1C (mouth color), 9B, step up = 20 beads.



Photo: Row 7 with mouth bead added, complete. The mouth is shown with a dark pink bead.

Row 8: Peyote 7B, 1D (cheek color), 4B, 1D, 7B, step up = 20 beads.



Photo: Row 8 with first two cheek beads added, complete. Cheeks shown with light pink beads.

Row 9: Peyote 6B, 2D, 3B, 2D, 7B, step up = 20 beads.

Row 10: Peyote 6B, 1D, 4B, 1D, 8B, step up = 20 beads.

Row 11: Peyote 6B, 1E (eye bead), 3B, 1E, 9B, step up = 20 beads

Row 12: Peyote 20B, step up.

Row 13: Peyote 20B, step up.

Row 14: Peyote 20B, step up.

Row 15: Peyote 20B, step up.

Row 16: Peyote 20B, step up.

→ **Stuff the head, manipulating the stuffing to fill the space evenly.**

Row 17: Peyote 2B, go through the next bead without adding a bead to create a decrease, peyote 5B, decrease, peyote 3B, decrease, peyote 5B, decrease, peyote 1B, step up = 16 beads.

Row 18: Peyote 16B, step up.

Row 19: (Peyote 3B, decrease.) Repeat 3 times, step up = 12 beads.

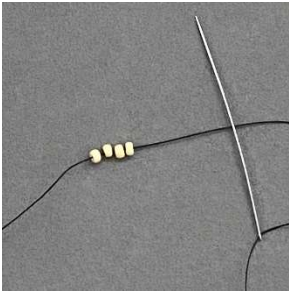
Row 20: Peyote 12B, step up.

Row 21: (Peyote 1B, decrease.) Repeat 5 times, step up = 6 beads.

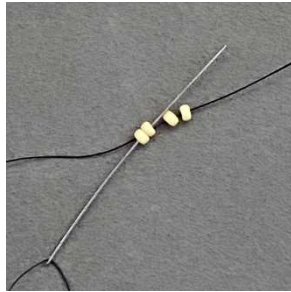
Row 22: Peyote 6B and then sew through all 6 beads = 6 beads. Secure and weave in thread.

Arm (make 2):

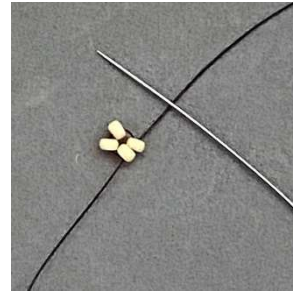
- Using a 2-foot length of thread, string 4 B (skin color) and sew through the first 2 beads to create 2 stacks with 2 beads per stack for the hands, leaving a 6-7" tail thread.
- String 2 A beads (dress/sleeve color) and then sew down one bead in the other stack and then sew back up through the original stack as a square stitch. Repeat 8 times using the sleeve color with a square stitch.
- There will be a total of 11 double stacks of beads: 2 stacks for hands and 9 stacks of the sleeve color. Secure and weave in the tail thread. The working thread will be used to attach the arm to the dress.
- Sew through the side bead on Row 35 of the dress and then sew back down all 11 beads on the other side of the arm. Sew back up through the 11 beads on the original side of the arm. Sew through the side dress bead to reinforce and then back into the arm. Secure and weave in the thread.



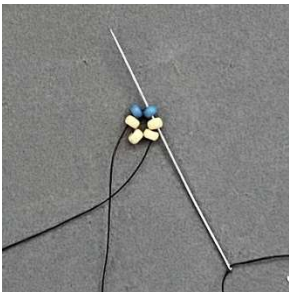
String 4 beads.



Sew up through the first 2 beads.



Hand beads complete.



Square stitch 2 sleeve beads.



Hand beads + first sleeve bead stacks.



Completed arm.

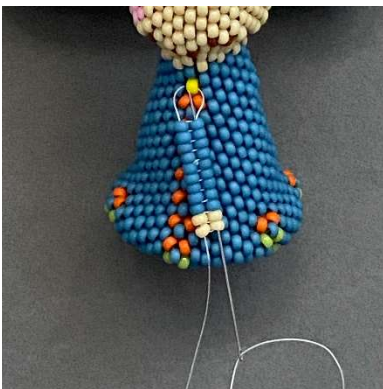
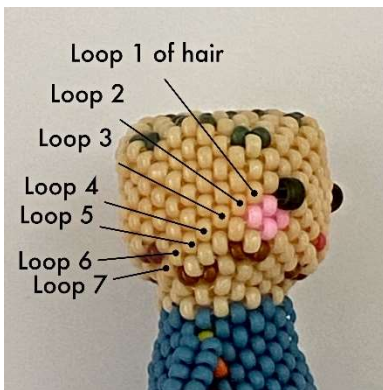


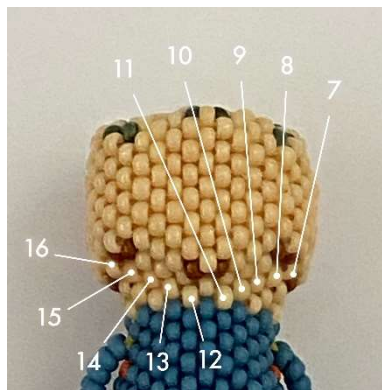
Photo: Attaching the arm to Row 35 side bead.

Hair:

- Secure a 2-foot thread to the front of the face near an eye (I recommend using the same color thread that was used for the skin) with the thread exiting the bead in the same row next to the eye. String 3 F (hair color) beads, sew through the same bead (same direction) as shown in “First 3 bead loop” photo below, and then sew down through the bead that’s diagonally below it. Repeat 10 times for a total of 11 loops that angle diagonally down toward the neck.
 - Weave up through the next bead (Row 2 center bead at the back of the head) without adding any beads, and then weave back down into the next bead to be in position for the 12th loop. String 3 beads, loop around the same bead, and then sew up through the bead that’s diagonally above it. Repeat 10 times for a total of 11 loops that angle diagonally up toward the eye. Secure and weave in both ends of the thread.
- ➔ The hair loops on both sides of the head start and end at the beads in the same row as the eye beads.



Location of first 7 hair loops



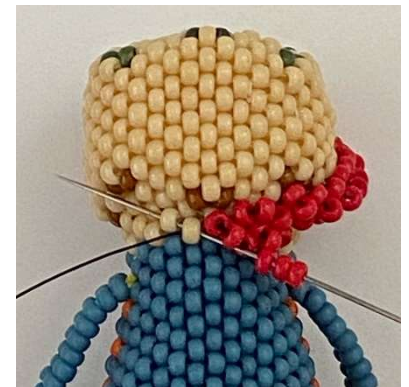
Back of head showing hair loops 7 through 16.



First 3 bead loop.



Adding 2nd loop on next row down.



Adding 12th loop.



Completed hair, front



Completed hair, back

Hat:

Rows 1-13: Using color (G) for all hat rows, follow the first 13 rows of the dress to create a hexagon shape. **Keep your work as flat as possible.**

Row 14: Peyote 30. **Adjust thread tension to create a slight, gentle curve for the top of the hat.**

Row 15: Peyote 30.

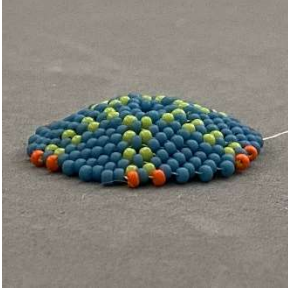


Photo: Row 15 complete showing slight curve of the hat.

Row 16: Peyote 2, decrease, *(peyote 4, decrease). Repeat from * 4 times, and then peyote 2 = 24 beads.

Row 17: Peyote 24.

→ Watch the thread tension on Rows 17-21. It's important not to tighten the thread too much (particularly on Row 17) or the hat will be too tight. The hat should comfortably slide over the head just above the hair, but still fit closely to the head. Check the fit after you bead each row to be sure the hat fits snugly up against the hair without a gap.

Row 18: Peyote 24.

Row 19: Peyote 24.

Row 20: Peyote 24.

Row 21: Peyote 24. Secure and weave in the tail thread. The working thread in its current position will be used to attach the hat to the head.

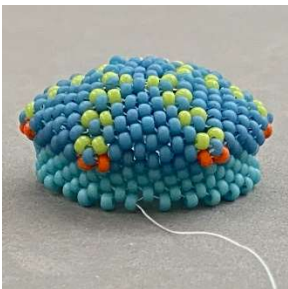


Photo: Hat complete. Note: This hat is made with Miyuki beads. A hat made with Toho beads will likely have less of a slope between decrease Row 16 and Row 21.

Attaching the hat to the head:

- Locate the 6 head beads that will be zipped to the hat.

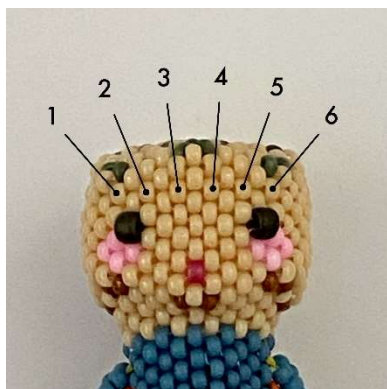


Photo: These are the 6 head beads that will attach to the hat. The photo is shown without the hair in place to make it easier to see where the hat attachment beads are located.

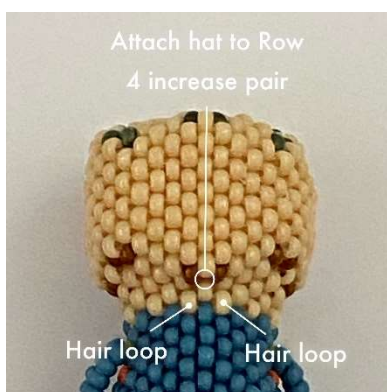


Photo: The hat will attach to the pair of increase beads in Row 4 on the back of the head.

- Using the working thread, zip 7 hat beads to the 6 head beads as shown in the photo.



Photo: Thread path of 7 hat beads zipping to the 6 head beads. (Red thread used to show the thread path.) The thread exits the 7th hat bead.

- Weaving through Rows 20 & 21 of the hat, sew through 8 “up” beads of hat Row 21 to move the thread into position to attach the hat to the back of the head. Sew through the pair of beads at the back center of the head of Row 4 just above the hair (brown beads in the photo) and then back into the hat in Row 21. (Note that you skip the back center “up” bead on the hat as shown in the photo.) Weave through the 8 “up” beads of hat Row 21 on the other side of the hat, which will help tighten down the hat to the head. Secure and weave in the thread.

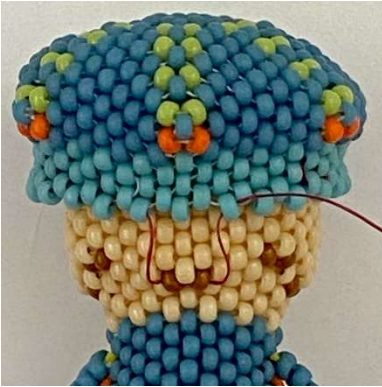


Photo: Sew through the Row 4 head increase beads and then back up into the hat.

Congratulations, you're done with Corinne!



Photos: Front & back views, complete.



Left to right: Fleur, Carrie, and Jessica, beaded by Nancy L Klimon



Maisie, beaded by Nancy Jenner



Cerise, beaded by Shawn Brown