

international celebration

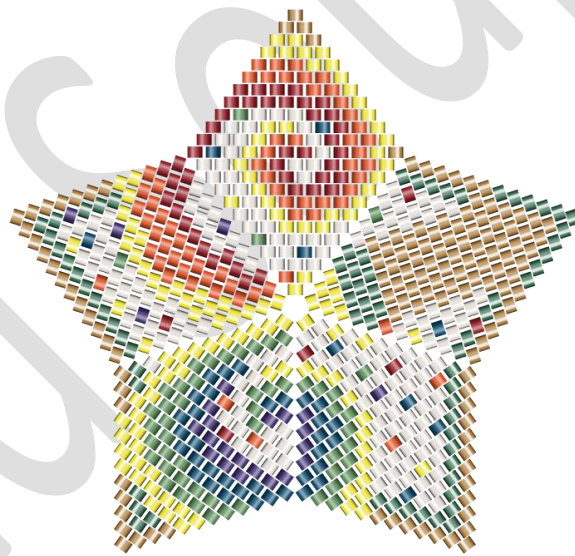
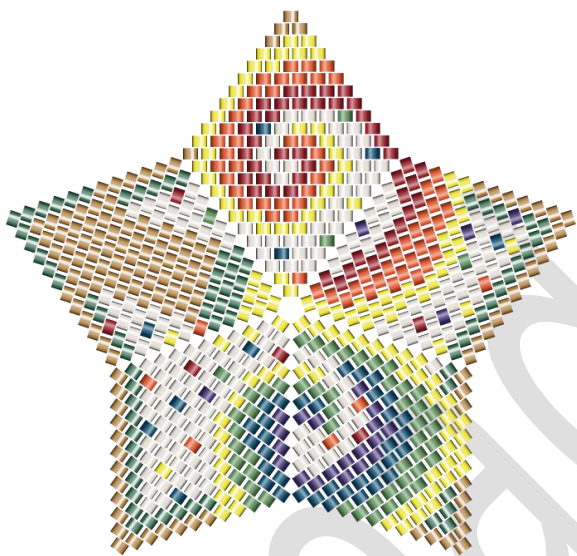
By Bead Soup in Savage, Maryland

12 rows, 2.33x2.32 inches



Front View








Back View

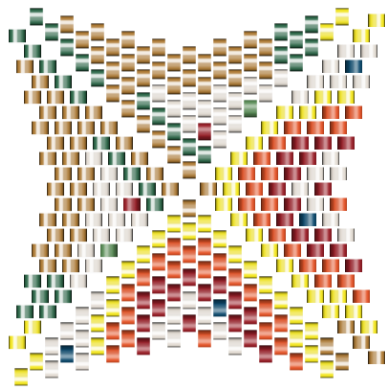


Bead List

Bead Symbol Count Description

| | | | |
|---|---|-----|----------------------------|
|  | A | 248 | Gold, Transparent (DB1832) |
|  | B | 236 | Yellow, Opaque (DB160) |

| | | | |
|---|---|-----|------------------------------|
|  | C | 340 | White, Transparent (DB1701) |
|  | D | 139 | Green, Transparent (DB125) |
|  | E | 100 | Red, Transparent (DB602) |
|  | F | 130 | Orange, Opaque (DB161) |
|  | G | 108 | Green, Opaque (DB163) |
|  | H | 86 | Blue, Transparent (DB2385) |
|  | I | 48 | Purple, Transparent (DB1755) |



Word Chart for warped square 1

Row 1: (4A)

(2B), 4F

(1B, 1C), 3C, 1D

Row 2: (1D, 1B)

(2A), 1D, 3C

(2B)

(1B, 1D)

(2A)

Row 3: (1C, 1B), 1B

(2B), 1B

(1B, 1C), 1D

(2A), 1D

Row 7: (2C), 1F, 3E, 1F

(2B), 1F, 3E, 1F

Row 4: (1C, 1B), 2F

(2C), 4C, 1A

(2B), 2F

(2D), 1A, 4C

(1B, 1C), 1E, 1D

(2A), 1D, 1E

Row 8: (1D, 1C), 1B, 4E, 1F

(2B), 1F, 4E, 1B

Row 5: (1G, 1B), 3F

(2B), 3F

(1C, 1D), 6A

(1B, 1G), 2C, 1D

(2A), 1D, 2C

(2D), 6A

Row 9: (1D, 1C), 1B, 1F, 1E, 1C, 1H, 1E, 1F

Row 6: (1C, 1B), 4F

(2B), 1F, 1E, 1H, 1C, 1E, 1F, 1B

Warped square

(1C, 1D), 1D, 6A

(2D), 6A, 1D

Row 10:(1B, 1C), 1C, 1F, 1E, 2C, 1E, 1F, 1B

(2A), 1B, 1F, 1E, 2C, 1E, 1F, 1C

(1C, 1B), 1D, 7A

(2D), 7A, 1D

Row 11:(2B), 1H, 1B, 1F, 1C, 1E, 1C, 1E, 1F,
1B

(2A), 1B, 1F, 1E, 1C, 1E, 1C, 1F, 1B,

1H

(2B), 2D, 7A

(2D), 7A, 2D

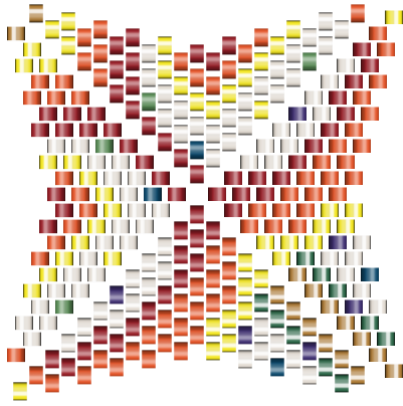
Row 12:(1B), 2C, 1F, 1E, 1C, 1F, 1C, 1E, 1F,
1B

(1A), 1B, 1F, 1E, 1C, 1F, 1C, 1E, 1F,

2C

(1B)

Bead Soup



Word Chart for warped square 2

Row 1: (4E)

Row 2: (1C, 1E)
(2E)
(1E, 1C)
(2E)

Row 3: (2C), 1E
(2F), 1E
(2C), 1H
(2E), 1H

Row 4: (2C), 1E, 1F
(2B), 1F, 1E
(2C), 2C
(2E), 2C

Row 5: (1B, 1C), 1C, 1E, 1F
(2B), 1F, 1E, 1C
(1C, 1B), 3C
(2E), 3C

Row 6: (1C, 1I), 1C, 1E, 1F, 1B
(2A), 1B, 1F, 1E, 1C
(1I, 1C), 1C, 1B, 1C, 1G
(2E), 1G, 1C, 1B, 1C

Row 7: (2C), 1C, 1E, 2F, 1D
(2A), 1D, 2F, 1E, 1C
(2C), 1C, 2B, 1C, 1E
(2F), 1E, 1C, 2B, 1C

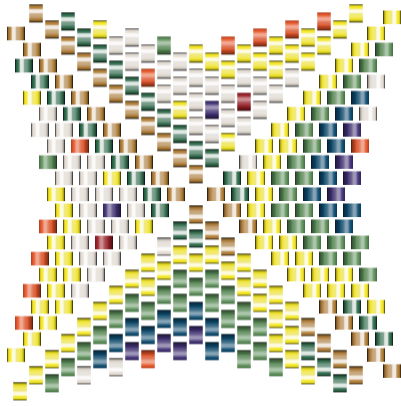
Row 8: (1G, 1C), 1C, 1E, 2F, 1B, 1D
(2A), 1D, 1B, 2F, 1E, 1C
(1C, 1G), 1C, 1B, 1F, 1B, 1C, 1E
(2F), 1E, 1C, 1B, 1F, 1B, 1C

Row 9: (2C), 2E, 2F, 1B, 1C, 1D
(2A), 1D, 1C, 1B, 2F, 2E
(2C), 1C, 1B, 2F, 1B, 1E, 1F
(2B), 1F, 1E, 1B, 2F, 1B, 1C

Row 10: (1C, 1E), 2E, 2F, 1B, 1I, 1C, 1I
(2A), 1I, 1C, 1I, 1B, 2F, 2E
(1E, 1C), 1C, 1B, 1F, 1E, 1F, 1C, 1E, 1F
(2B), 1F, 1E, 1C, 1F, 1E, 1F, 1B, 1C

Row 11: (2F), 1E, 4F, 1B, 2C, 1D
(2A), 1D, 2C, 1B, 4F, 1E
(2F), 1C, 1B, 1F, 2E, 1B, 1E, 1F, 1B
(2A), 1B, 1F, 1E, 1B, 2E, 1F, 1B, 1C

Row 12: (1B), 5F, 1B, 1C, 1H, 1C, 1D
(1A), 1D, 1C, 1H, 1C, 1B, 5F
(1B)



Word Chart for warped square 3

Row 1: (4A)

Row 2: (2D)

(2A)

(2D)

(2A)

Row 3: (1B, 1C), 1D

(2A), 1D

(1C, 1B), 1D

(2A), 1D

Row 4: (1C, 1B), 2B

(2B), 2B

(1B, 1C), 1C, 1D

(2A), 1D, 1C

Row 5: (1C, 1B), 3B

(2B), 3B

(1B, 1C), 2C, 1D

(2A), 1D, 2C

Row 6: (1C, 1B), 1B 2G 1B

(2B), 1B, 2G, 1B

(1B, 1C), 1E, 1I, 1B, 1D

(2A), 1D, 1B, 1I, 1E

Row 7: (1C, 1B), 4G, 1B

(2B), 1B, 4G

(1B, 1C), 4C, 1D

(2A), 1D, 4C

Row 8: (2B), 5G, 1B

(2A), 1B, 5G

(2B), 1B, 3C, 1F, 1D

(2A), 1D, 1F, 3C, 1B

Row 9: (2B), 1G, 3H, 2G, 1B

(2A), 1B, 2G, 3H, 1G

(2B), 3B, 3C, 1D

(2A), 1D, 3C, 3B

Row 10: (2B), 1G, 4H, 1G, 1B, 1D

(2A), 1D, 1B, 1G, 4H, 1G

(2B), 4B, 3C, 1D

(2A), 1D, 3C, 4B

Row 11: (2B), 1G, 1H, 3I, 1H, 1G, 1B, 1D

(2A), 1D, 1B, 1G, 1H, 3I, 1H, 1G

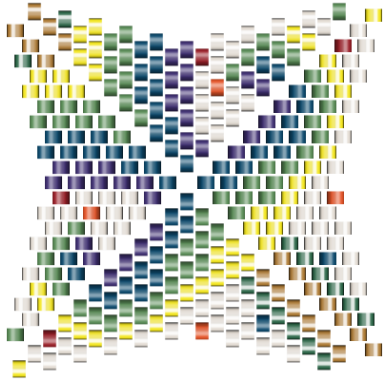
(2B), 4F, 1B, 1G, 1C, 1B, 1D

(2A), 1D, 1B, 1C, 1G, 1B, 4F

Row 12: (1B), 1G, 2C, 1F, 1I, 1H, 2G, 1B, 1D

(1A), 1D, 1B 2G 1H, 1I, 1F, 2C, 1G

(1B)



Word Chart for warped square 4

Row 1: (4H)

Row 2: (1I, 1H)
(2G)
(1H, 1I)
(2H)

Row 3: (1C, 1I), 1H
(2G), 1H
(1I, 1C), 1I
(2H), 1I

Row 4: (1C, 1I), 1H, 1G
(2B), 1G, 1H
(1I, 1C), 1C, 1H
(2G), 1H, 1C

Row 5: (1C, 1I), 1H, 1G, 1B
(2B), 1B, 1G, 1H
(1I, 1C), 1C, 1I, 1H
(2G), 1H, 1I, 1C

Row 6: (2I), 1H, 2G, 1B
(2A), 1B, 2G, 1H
(2I), 2C, 1I, 1H
(2G), 1H, 1I, 2C

Row 7: (2H), 2H, 1G, 1B, 1D
(2A), 1D, 1B, 1G, 2H
(2H), 1I, 1F, 1I, 1H, 1G
(2B), 1G, 1H, 1I, 1F, 1I

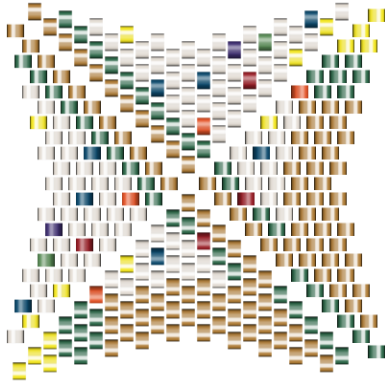
Row 8: (2G), 2H, 1G, 1B, 1C, 1D
(2A), 1D, 1C, 1B, 1G, 2H
(2G), 1H, 1G, 1C, 1I, 1H, 1G
(2B), 1G, 1H, 1I, 1C, 1G, 1H

Row 9: (2B), 3G, 1B, 2C, 1D
(2A), 1D, 2C, 1B, 3G
(2B), 2G, 1C, 1I, 1H, 1G, 1B
(2A), 1B, 1G, 1H, 1I, 1C, 2G

Row 10: (1C, 1E), 1B, 2G, 1B, 2C, 1H, 1D
(2A), 1D, 1H, 2C, 1B, 2G, 1B
(1E, 1C), 1B, 1G, 1C, 1E, 1I, 1H, 1G, 1B
(2A), 1B, 1G, 1H, 1I, 1E, 1C, 1G, 1B

Row 11: (1G, 1C), 1C, 3B, 4C, 1D
(2A), 1D, 4C, 3B, 1C
(1C, 1G), 4C, 1I, 1H, 1G, 1B, 1D
(2A), 1D, 1B, 1G, 1H, 1I, 4C

Row 12: (1B), 5C, 1F, 3C, 1D
(1A), 1D, 3C, 1F, 5C
(1B)



Word Chart for warped square 5

Row 1: (4A)

Row 2: (2D)
(2A)
(2D)
(2A)

Row 3: (2C), 1D
(2A), 1D
(2C), 1D
(2A), 1D

Row 4: (2C), 1C, 1E
(2A), 1E, 1C
(2C), 1F, 1D
(2A), 1D, 1F

Row 5: (1C, 1B), 1H, 1C, 1D
(2A), 1D, 1C, 1H
(1B, 1C), 2C, 1D
(2A), 1D, 2C

Row 6:
(2C), 3C, 1D
(2A), 1D, 3C
(2C), 3C, 1D
(2A), 1D, 3C

Row 7: (1C, 1F), 4C, 1A
(2D), 1A, 4C
(1F, 1C), 1E, 2C, 1H, 1D
(2A), 1D, 1H, 2C, 1E

Row 8: (1B, 1D), 6A
(2D), 6A
(1D, 1B), 2C, 1H, 2C, 1D
(2A), 1D, 2C, 1H, 2C

Row 9: (1C, 1D), 1D, 6A
(2D), 6A, 1D
(1D, 1C), 6C, 1D
(2A), 1D, 6C

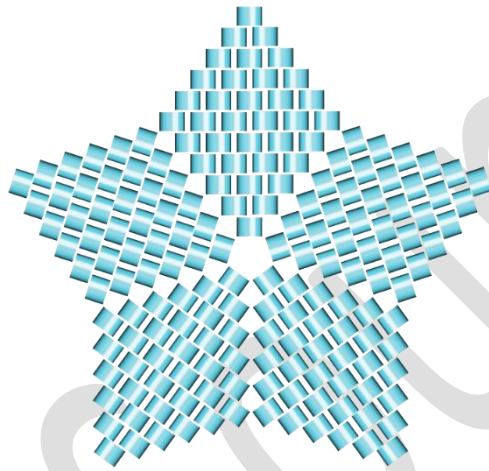
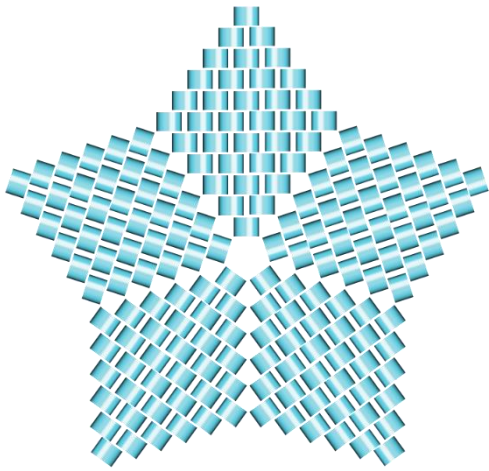
Row 10:(2B), 1D, 7A
(2D), 7A, 1D
(2B), 1C, 1G, 1I, 4C, 1D
(2A), 1D, 4C, 1I, 1G, 1C

Row 11:(1C, 1B), 2D, 7A
(2D), 7A, 2D
(1B, 1C), 1H, 5C, 1B, 1C, 1D
(2A), 1D, 1C, 1B, 5C, 1H


Row 12:(1B), 1B, 1D, 8A
(1D), 8A, 1D, 1B
(1B)

Mini Star by Bead Soup

381 beads. Project dimensions: 2.94 x 2.94 cm 1.16 x 1.16 inches.



Bead Symbol Count Description

 A 355 Galvanized

Word Chart for warped square 1, 2, 3, 4, 5

Row 1: (4A)

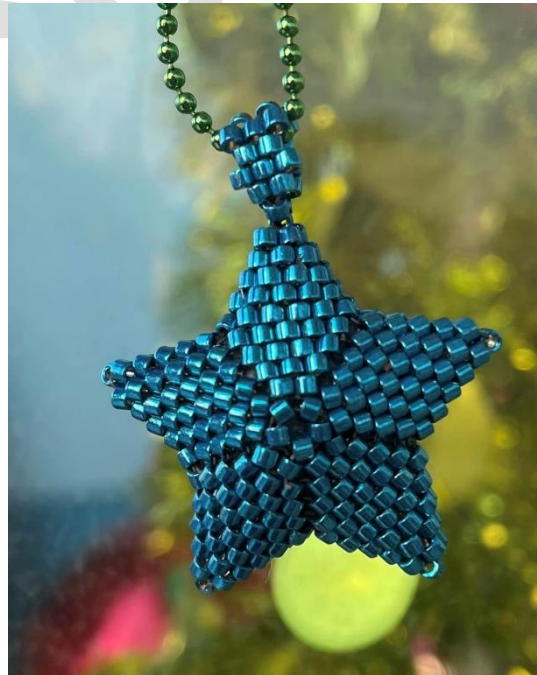
Row 2: (2A); (2A); (2A); (2A)

Row 3: (2A), 1A; (2A), 1A; (2A), 1A; (2A), 1A

Row 4: (2A), 2A; (2A), 2A; (2A), 2A; (2A), 2A

Row 5: (2A), 3A; (2A), 3A; (2A), 3A; (2A), 3A

Row 6: (1A), 4A; (1A), 4A; (1A)

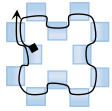


The mini star is included in these directions for the novice starmaker to show how a star is beaded using peyote stitch to make 5 warped squares and assemble them into a star. The mini star teaches the technique which can be applied to making stars of any size or pattern.

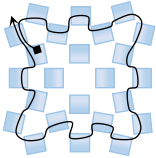
Thread a beading needle with 24 inches of fireline. As the beading grows, the square will warp. This is the desired result, avoid the urge to flatten the square.



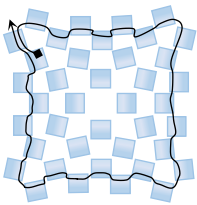
Round 1—Pick up 4 A's. Slide down the thread leaving enough tail to weave in later. Go through all 4 beads again 2 times. Continue through the 1st A.



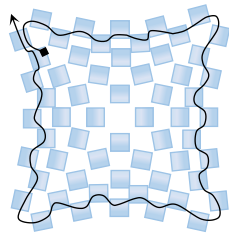
Round 2—Pick up 2 A's. Go through the next round 1 A. Repeat 3 times. Each pair of A's form a corner of the beadwork. At the end of the round, step up by going through the 1st A added in this round.



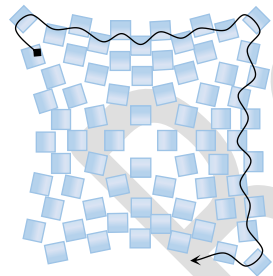
Round 3—Pick up 2 A's. Go through the next A from round 2. Peyote 1A between the corners. Repeat this entire sequence 3 times. At the end of the round, step up by going through the 1st A added in this round.



Round 4—Pick up 2 A's. Go through the next bead from round 3. Peyote 2 spaces along the side with a A. Repeat this entire sequence 3 times. At the end of the round, step up by going through the 1st A added in this round.



Round 5—Pick up 2 A's. Go through the next bead from round 4. Peyote 3 spaces with an A. Repeat this entire sequence 3 times. Step up 1st A added in this round

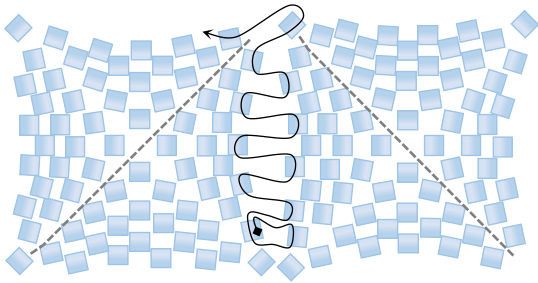


Round 6—Pick up an A and go through the next round 5 bead at the corner. Peyote 4 spaces with an A. Repeat 1 time.

Pick up an A and go through the next round 5 bead at the corner. Leave the working thread in place. Secure and end the tail.

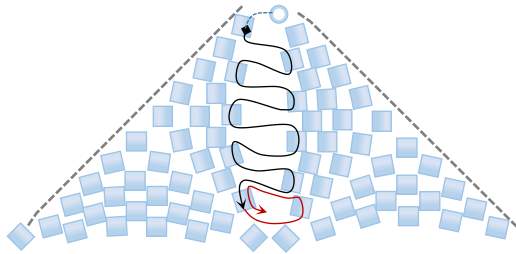
Repeat this process to make 4 more squares.

Assembling the star—Assemble the first 2 squares. Make sure the squares are folded so that the 2 points with extra beads opposite each other meet and the spine has one corner with a round 6 bead and one corner with no round 6 bead. (dotted line indicates the spine where the square is folded)



Zip the 2 squares together—With the thread exiting square 1, first bead after the corner. Go through the same bead on square 2 moving toward the corner. Go through the bead the thread started in on square 1.

Go through the 1st edge bead on square 2. Go through the 2nd edge bead on square 1. The beads will pull together like the teeth on a zipper. Continue zipping back and forth between the edge beads on square 2 and square 1 to exit the corner bead on square 1.

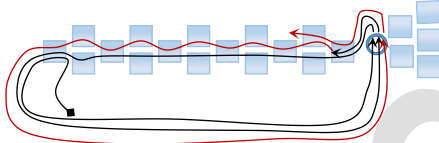


Go through the corner bead on square 2 then go through the next corner bead on square 1. Zip the edge beads on this face of the square together. End by square stitching the 1st bead along the side of square 1 and 2 together. End the thread.

In the same way zip the 3rd square to the 2nd, the 4th to the 3rd and the 5th to the 4th. Add stuffing to the center of the star if desired before closing the last side. Finally zip the 1st square to the 5th. Weave through the 5 corner beads at the center of each side to close the opening. Secure all threads and weave them in.

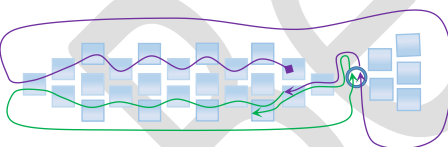
Adding a Bail:

Row 1—On a new thread, pick up an A. Go through the A at the tip of one of the star’s points. Pick up 10 more A’s. Go through the 1st A, the A at the tip of the star. Continue through the A after the tip of the star. (black line)



this row. (red line, above)

Row 2—Peyote with A. Repeat 4 times. Weave through the A at the tip of the star and the 1st A after the tip. Step up 1st added in



Row 3—Peyote with A. Repeat 3 times. Weave through the next 2 beads, the tip of the star and the first 2 A’s after the tip along the opposite edge of the bail. (purple line)

Peyote this edge of the strip with A. (4 beads total, green line)

Secure and end the working thread and tail.