

*Fiesta Time*  
bracelet pattern



# Fiesta Time

peyote stitch  
even count, one drop

[www.craftybead.art](http://www.craftybead.art)

---

[look@craftybead.art](mailto:look@craftybead.art)

Crafty Bead 

All rights reserved

© CraftyBead.art 2023

**Hello!**

Thank you very much for purchasing this pattern.

I hope you will find it easy to work with and the result will make you happy.

If you find a bug or have any comments - please contact me.

I want each of my clients to be satisfied and want to come back to me.

**In this manual you will find:**

- 1** Parameters of the bracelet from the photo
- 2** Colors and amount of beads
- 3** Two kinds of pattern
- 4** Pattern mask
- 5** JPG file
- 6** Word chart

The beauty of creating is in freedom, inspiration and variety, so this bracelet can also be stitched with other cylindrical (eg. TOHO Treasure) or rounded beads (seed beads) and with different colors. Just keep in mind that different beads may change the dimensions.

I've created this bracelet so that it can be easily adjusted to the size of your wrist. If you want, you can naturally shorten or lengthen it by several rows, symmetrically at the bottom and top.

**Join my mailing list**

[www.craftybead.art/newsletter](http://www.craftybead.art/newsletter)

**and my fb fanpage**

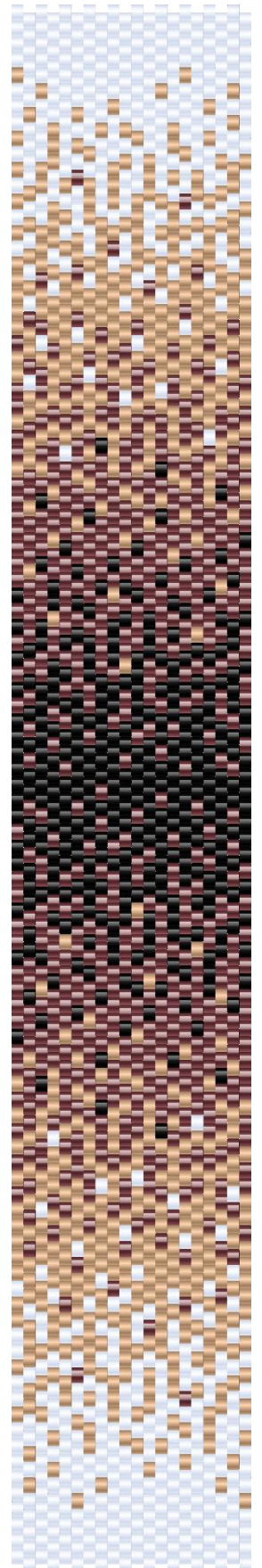
[www.facebook.com/CraftyBead.art](http://www.facebook.com/CraftyBead.art)

I reserve the rights to this pattern and all files and photos included in the offer.

Do not copy, resell, distribute or teach it without my permission.

You can use the made piece for non-mass sale or present its photos to the public with credits given to my brand - Crafty Bead.

Please, be fair and supportive. Thank you. ♥



## **1** Parameters of the bracelet from the photo

The bracelet you can see on the first page is made of beads Miyuki Delica 11.  
This pattern is for peyote stitch. Even count, one drop.

Columns and rows: 20 columns x 198 rows (99 to the right and 99 to the left)

Approximate dimensions after sewing: 1,1 in x 6,7 in  
27 mm x 169 mm

## **2** Colors and amount of beads

- A** MD DB0010 328 pcs  
Black
- B** MD DB0116 590 pcs  
Trans Red Gold Luster
- C** MD DB0200 512 pcs  
Opaque White
- D** MD DB0411 550 pcs  
Galvanized Apricot Gold



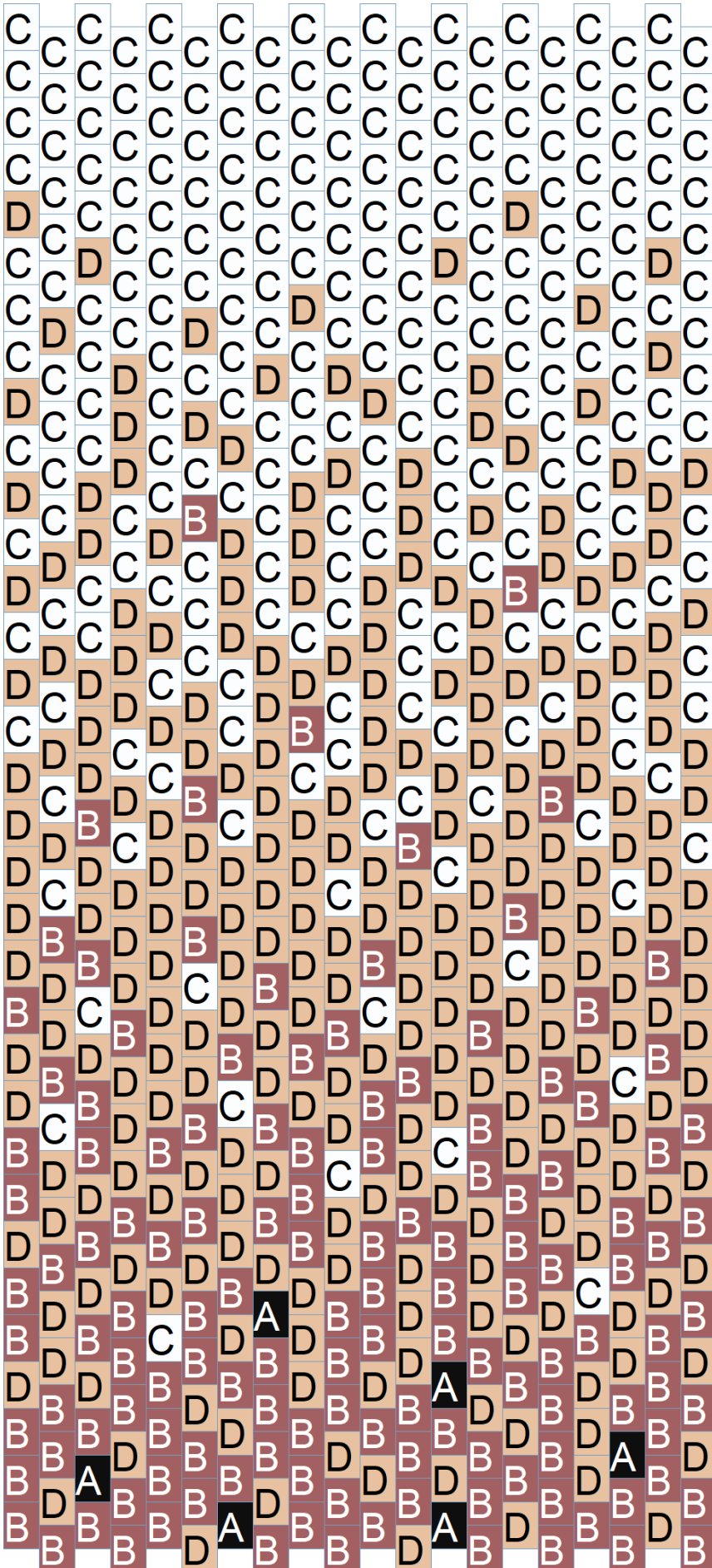
## **3** Two kinds of pattern

Below you will find three versions of the same pattern (each page ready to print, if you like to work with a printed pattern):

- full with letters and colors
- only letters (you can color it with your own palette)

I suggest you start beading from the bottom left corner (marked).

TOP PART (rows 133 to 198, from bottom to top)



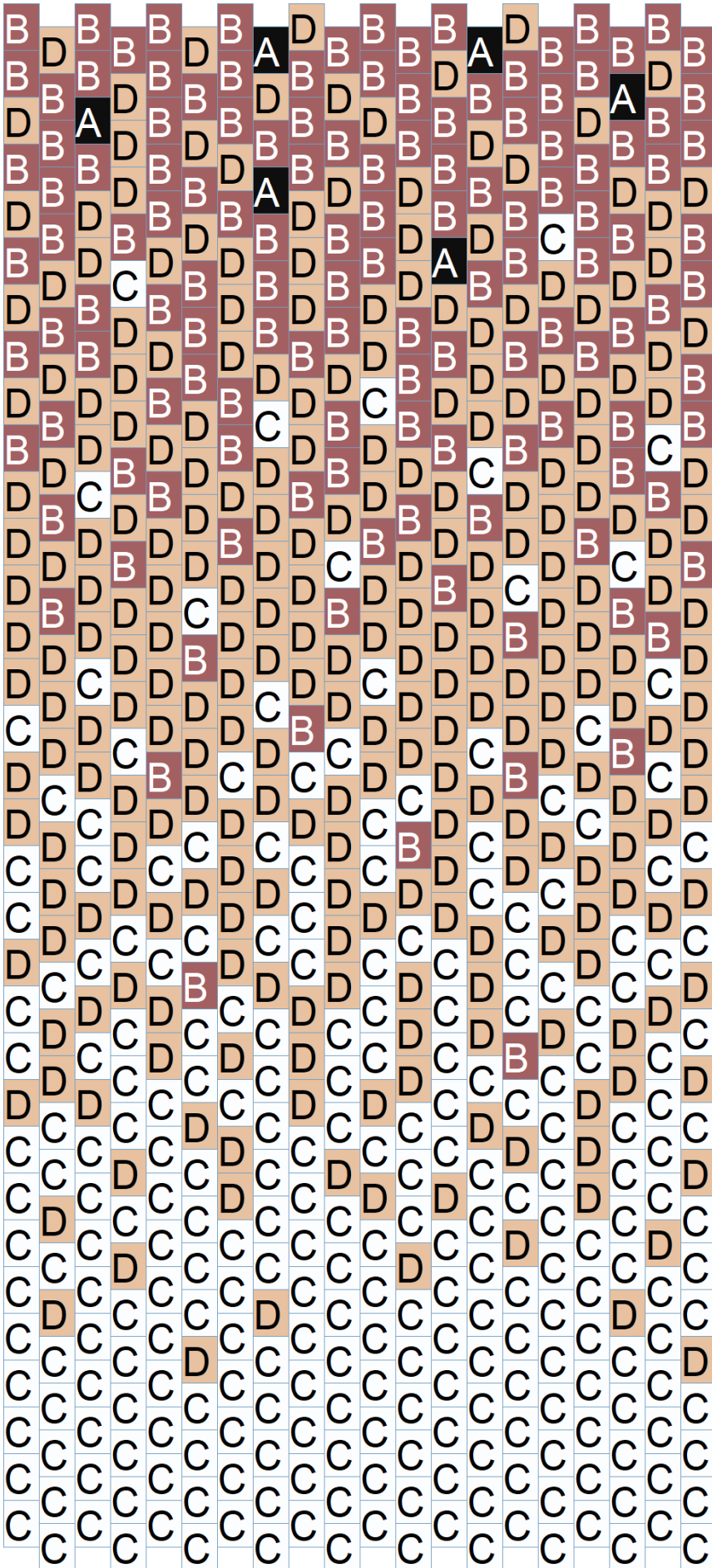
- A** MD DB0010
- B** MD DB0116
- C** MD DB0200
- D** MD DB0411

MIDDLE PART (rows 67 to 132, from bottom to top)





BOTTOM PART (rows 1 to 66, from bottom to top)



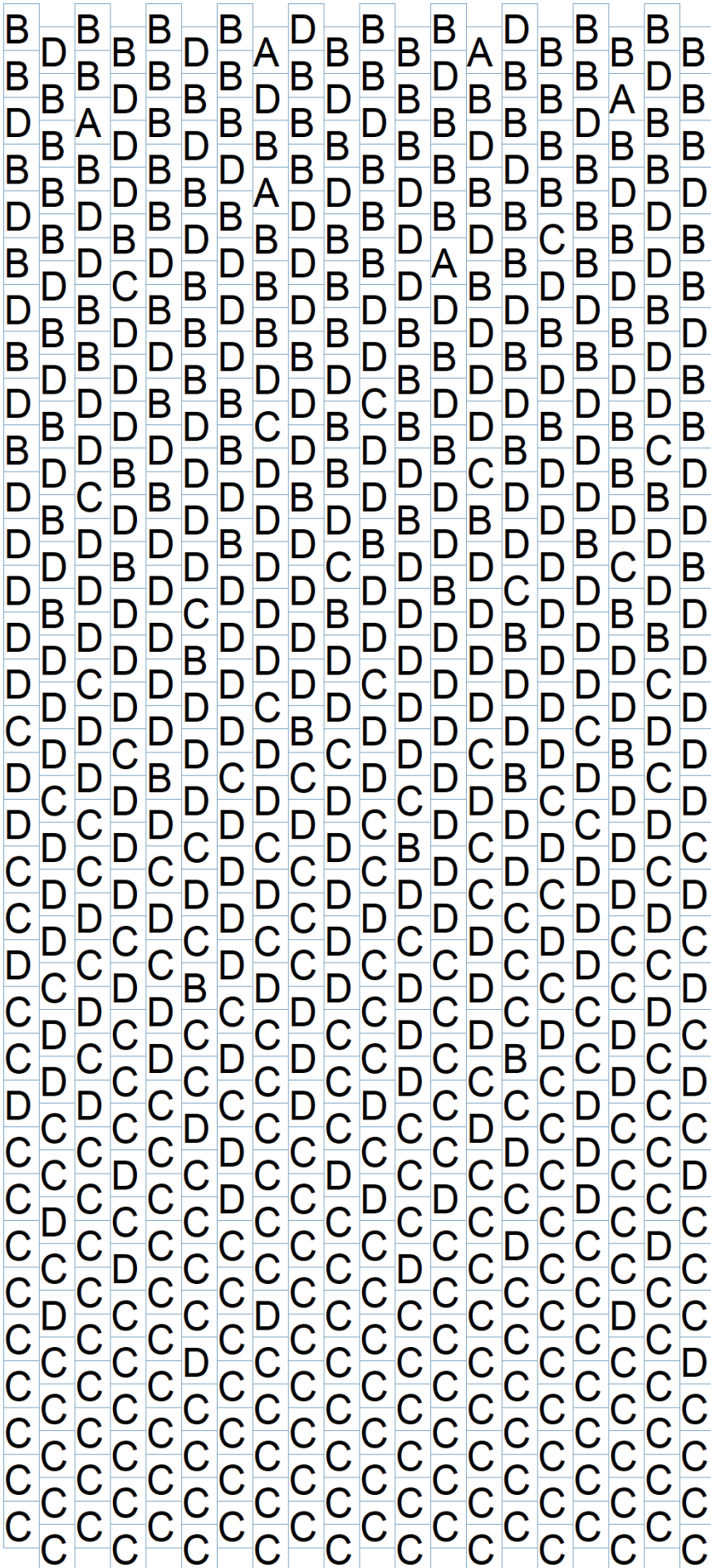
↑ start here







BOTTOM PART (rows 1 to 66, from bottom to top)



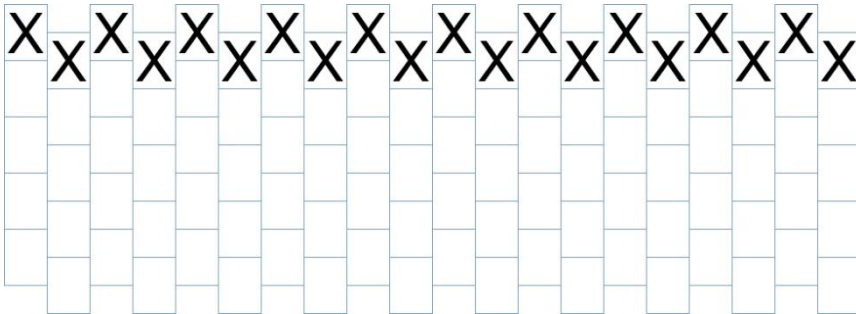
↑ start here

#### **4** Pattern mask

If you decide to print one of the above patterns and work on a printout rather than a digital version, below you have the so-called pattern mask.

All you have to do is print out this page, cut out the mask and put it on the pattern sheet.

This way you will not mistake stitched rows with those not stitched yet.



#### **5** JPG file

You also have a separate .jpg file attached to this pattern.

Useful if you prefer to stitch from the digital version.

I like to open it e.g. in Paint and cross out each beaded row.

## 6 Word chart

A	MD DB0010	328 pcs	Black
B	MD DB0116	590 pcs	Trans Red Gold Luster
C	MD DB0200	512 pcs	Opaque White
D	MD DB0411	550 pcs	Galvanized Apricot Gold

The first and second rows of the word chart are the two bottom rows of the bracelet, so read down but stitch up.

→ means you are starting from left to right

← from right to left

Have a nice beading and a nice day :)

Row 1&2	→	20C
Row 3	←	10C
Row 4	→	10C
Row 5	←	10C
Row 6	→	10C
Row 7	←	10C
Row 8	→	10C
Row 9	←	1D, 6C, 1D, 2C
Row 10	→	10C
Row 11	←	1C, 1D, 4C, 1D, 2C, 1D
Row 12	→	10C
Row 13	←	4C, 1D, 3C, 1D, 1C
Row 14	→	7C, 1D, 1C, 1D
Row 15	←	9C, 1D
Row 16	→	3C, 1D, 1C, 2D, 1C, 1D, 1C
Row 17	←	1D, 4C, 1D, 2C, 1D, 1C
Row 18	→	3C, 1D, 3C, 2D, 1C
Row 19	←	3C, 1D, 3C, 1D, 2C
Row 20	→	2D, 2C, 2D, 2C, 1D, 1C
Row 21	←	2D, 2C, 1D, 4C, 1D
Row 22	→	2C, 3D, 2C, 1B, 2C
Row 23	←	1C, 4D, 4C, 1D
Row 24	→	1C, 2D, 1C, 1D, 4C, 1D
Row 25	←	1D, 2C, 4D, 1B, 1D, 1C

Row 26 → 1D, 2C, 1D, 4C, 1D, 1C  
 Row 27 ← 2C, 2D, 1C, 1D, 3C, 1D  
 Row 28 → 1C, 3D, 1C, 2D, 1C, 2D  
 Row 29 ← 2D, 2C, 6D  
 Row 30 → 3C, 1D, 2C, 3D, 1C  
 Row 31 ← 1C, 2D, 1C, 1B, 1D, 2C, 2D  
 Row 32 → 1D, 1C, 3D, 1C, 2D, 1C, 1D  
 Row 33 ← 2D, 1C, 1D, 1C, 4D, 1C  
 Row 34 → 2D, 1B, 2C, 2D, 1B, 1D, 1C  
 Row 35 ← 1D, 1B, 1D, 1C, 1D, 1C, 2D, 1C, 1D  
 Row 36 → 1C, 3D, 1B, 3D, 1C, 1D  
 Row 37 ← 6D, 1C, 3D  
 Row 38 → 1D, 1C, 3D, 1C, 3D, 1C  
 Row 39 ← 7D, 1B, 2D  
 Row 40 → 7D, 1B, 1D, 1B  
 Row 41 ← 1D, 1B, 3D, 1B, 1D, 1C, 1D, 1B  
 Row 42 → 6D, 1B, 1C, 2D  
 Row 43 ← 1B, 1C, 3D, 1C, 2D, 1B, 1D  
 Row 44 → 3D, 1B, 1D, 1B, 2D, 1B, 1D  
 Row 45 ← 3D, 2B, 4D, 1B  
 Row 46 → 1D, 1C, 1B, 1D, 1B, 4D, 1B  
 Row 47 ← 1D, 1B, 1D, 1C, 1D, 1B, 2D, 1B, 1D  
 Row 48 → 1B, 2D, 1B, 2D, 2B, 1D, 1C  
 Row 49 ← 3B, 1D, 2B, 1C, 2D, 1B  
 Row 50 → 2D, 2B, 1D, 1C, 4D  
 Row 51 ← 1B, 3D, 1B, 2D, 1B, 2D  
 Row 52 → 2B, 2D, 1B, 1D, 3B, 1D  
 Row 53 ← 1D, 2B, 1D, 4B, 1D, 1B  
 Row 54 → 1D, 2B, 6D, 1B  
 Row 55 ← 1B, 2D, 1B, 1D, 3B, 1C, 1D  
 Row 56 → 1B, 4D, 1B, 1A, 2B, 1D  
 Row 57 ← 2B, 1C, 2D, 2B, 1D, 2B  
 Row 58 → 2D, 2B, 1D, 4B, 1D  
 Row 59 ← 2D, 2B, 2D, 1A, 1B, 1D, 1B  
 Row 60 → 3B, 1D, 3B, 1D, 2B  
 Row 61 ← 3B, 1D, 3B, 2D, 1B  
 Row 62 → 1D, 1A, 3B, 1D, 2B, 1D, 1B  
 Row 63 ← 1B, 1A, 3B, 2D, 1B, 1D, 1B  
 Row 64 → 6B, 1D, 2B, 1D  
 Row 65 ← 3B, 1A, 2B, 1A, 1D, 1B, 1D  
 Row 66 → 4B, 1D, 2B, 1D, 2B  
 Row 67 ← 1B, 1D, 8B

Row 68 → 1A, 1B, 1D, 2B, 1D, 4B  
 Row 69 ← 2B, 1A, 2B, 1A, 4B  
 Row 70 → 1B, 1A, 1B, 1D, 6B  
 Row 71 ← 4B, 1A, 2B, 1A, 2B  
 Row 72 → 7B, 1A, 1B, 1A  
 Row 73 ← 1B, 1D, 4B, 1A, 2B, 1A  
 Row 74 → 1B, 1D, 3B, 2A, 1B, 1A, 1B  
 Row 75 ← 1A, 3B, 1D, 1A, 2B, 1A, 1B  
 Row 76 → 3B, 1A, 3B, 2A, 1B  
 Row 77 ← 3B, 1A, 3B, 1A, 2B  
 Row 78 → 2A, 2B, 2A, 2B, 1A, 1B  
 Row 79 ← 2A, 1D, 1B, 1A, 4B, 1A  
 Row 80 → 2B, 1D, 2A, 2B, 1A, 2B  
 Row 81 ← 1B, 4A, 4B, 1A  
 Row 82 → 2B, 1A, 1B, 1A, 4B, 1A  
 Row 83 ← 1A, 2B, 6A, 1B  
 Row 84 → 1A, 2B, 1A, 1B, 1D, 2B, 1A, 1B  
 Row 85 ← 2B, 2A, 1B, 1A, 3B, 1A  
 Row 86 → 1B, 3A, 1B, 2A, 1B, 2A  
 Row 87 ← 2A, 2B, 6A  
 Row 88 → 3B, 1A, 2B, 3A, 1B  
 Row 89 ← 1B, 2A, 1B, 2A, 2B, 2A  
 Row 90 → 1A, 1B, 3A, 1B, 2A, 1B, 1A  
 Row 91 ← 2A, 1B, 1A, 1B, 4A, 1B  
 Row 92 → 3A, 2B, 4A, 1B  
 Row 93 ← 3A, 1B, 1A, 1B, 2A, 1B, 1A  
 Row 94 → 1B, 7A, 1B, 1A  
 Row 95 ← 6A, 1B, 3A  
 Row 96 → 1A, 1B, 3A, 1B, 3A, 1B  
 Row 97 ← 2A, 1B, 4A, 1B, 1A, 1B  
 Row 98 → 6A, 1B, 3A  
 Row 99 ← 6A, 1B, 3A  
 Row 100 → 10A  
 Row 101 ← 10A  
 Row 102 → 2A, 1B, 4A, 1B, 1A, 1B  
 Row 103 ← 1A, 1B, 3A, 1B, 3A, 1B  
 Row 104 → 6A, 1B, 3A  
 Row 105 ← 1B, 7A, 1B, 1A  
 Row 106 → 3A, 1B, 1A, 1B, 2A, 1B, 1A  
 Row 107 ← 3A, 2B, 4A, 1B  
 Row 108 → 2A, 1B, 1A, 1B, 4A, 1B  
 Row 109 ← 1A, 1B, 3A, 1B, 2A, 1B, 1A



Row 110 → 1B, 2A, 1B, 2A, 2B, 2A  
 Row 111 ← 3B, 1A, 2B, 3A, 1B  
 Row 112 → 2A, 2B, 6A  
 Row 113 ← 1B, 3A, 1B, 2A, 1B, 2A  
 Row 114 → 2B, 2A, 1B, 1A, 3B, 1A  
 Row 115 ← 1A, 2B, 1A, 1B, 1D, 2B, 1A, 1B  
 Row 116 → 1A, 2B, 6A, 1B  
 Row 117 ← 1B, 2A, 1B, 1A, 4B, 1A  
 Row 118 → 1B, 4A, 4B, 1A  
 Row 119 ← 2B, 1D, 2A, 2B, 1A, 2B  
 Row 120 → 2A, 2B, 1A, 4B, 1A  
 Row 121 ← 2A, 2B, 2A, 2B, 1D, 1B  
 Row 122 → 3B, 1A, 3B, 1A, 2B  
 Row 123 ← 3B, 1A, 3B, 2A, 1B  
 Row 124 → 1A, 3B, 1D, 1A, 2B, 1A, 1B  
 Row 125 ← 1B, 1D, 3B, 2A, 1B, 1A, 1B  
 Row 126 → 6B, 1A, 2B, 1A  
 Row 127 ← 7B, 1A, 1B, 1D  
 Row 128 → 1B, 1A, 2B, 1A, 2B, 1A, 2B  
 Row 129 ← 1B, 1A, 1B, 1D, 6B  
 Row 130 → 2B, 1A, 2B, 1A, 4B  
 Row 131 ← 1A, 1B, 1D, 2B, 1D, 2B, 1D, 1B  
 Row 132 → 10B  
 Row 133 ← 4B, 1D, 2B, 1D, 2B  
 Row 134 → 3B, 1A, 2B, 1A, 1D, 1B, 1D  
 Row 135 ← 6B, 1D, 2B, 1D  
 Row 136 → 1B, 1A, 3B, 2D, 1B, 1D, 1B  
 Row 137 ← 1D, 1A, 3B, 1D, 2B, 1D, 1B  
 Row 138 → 3B, 1D, 3B, 2D, 1B  
 Row 139 ← 3B, 1D, 3B, 1D, 2B  
 Row 140 → 2D, 2B, 2D, 1A, 1B, 1D, 1B  
 Row 141 ← 2D, 2B, 1D, 4B, 1D  
 Row 142 → 2B, 1C, 2D, 2B, 1D, 2B  
 Row 143 ← 1B, 4D, 1B, 1A, 2B, 1D  
 Row 144 → 1B, 2D, 1B, 1D, 3B, 1C, 1D  
 Row 145 ← 1D, 2B, 6D, 1B  
 Row 146 → 1D, 2B, 1D, 4B, 1D, 1B  
 Row 147 ← 2B, 2D, 1B, 1D, 3B, 1D  
 Row 148 → 1B, 3D, 1B, 2D, 1B, 2D  
 Row 149 ← 2D, 2B, 1D, 1C, 4D  
 Row 150 → 3B, 1D, 2B, 1C, 2D, 1B  
 Row 151 ← 1B, 2D, 1B, 2D, 2B, 1D, 1C

Row 152 → 1D, 1B, 1D, 1C, 1D, 1B, 2D, 1B, 1D  
 Row 153 ← 1D, 1C, 1B, 1D, 1B, 4D, 1B  
 Row 154 → 3D, 2B, 4D, 1B  
 Row 155 ← 3D, 1B, 1D, 1B, 2D, 1B, 1D  
 Row 156 → 1B, 1C, 3D, 1C, 2D, 1B, 1D  
 Row 157 ← 6D, 1B, 1C, 2D  
 Row 158 → 1D, 1B, 3D, 1B, 1D, 1C, 1D, 1B  
 Row 159 ← 7D, 1B, 1D, 1B  
 Row 160 → 7D, 1B, 2D  
 Row 161 ← 1D, 1C, 3D, 1C, 3D, 1C  
 Row 162 → 6D, 1C, 3D  
 Row 163 ← 1C, 3D, 1B, 3D, 1C, 1D  
 Row 164 → 1D, 1B, 1D, 1C, 1D, 1C, 2D, 1C, 1D  
 Row 165 ← 2D, 1B, 2C, 2D, 1B, 1D, 1C  
 Row 166 → 2D, 1C, 1D, 1C, 4D, 1C  
 Row 167 ← 1D, 1C, 3D, 1C, 2D, 1C, 1D  
 Row 168 → 1C, 2D, 1C, 1B, 1D, 2C, 2D  
 Row 169 ← 3C, 1D, 2C, 3D, 1C  
 Row 170 → 2D, 2C, 6D  
 Row 171 ← 1C, 3D, 1C, 2D, 1C, 2D  
 Row 172 → 2C, 2D, 1C, 1D, 3C, 1D  
 Row 173 ← 1D, 2C, 1D, 4C, 1D, 1C  
 Row 174 → 1D, 2C, 4D, 1B, 1D, 1C  
 Row 175 ← 1C, 2D, 1C, 1D, 4C, 1D  
 Row 176 → 1C, 4D, 4C, 1D  
 Row 177 ← 2C, 3D, 2C, 1B, 2C  
 Row 178 → 2D, 2C, 1D, 4C, 1D  
 Row 179 ← 2D, 2C, 2D, 2C, 1D, 1C  
 Row 180 → 3C, 1D, 3C, 1D, 2C  
 Row 181 ← 3C, 1D, 3C, 2D, 1C  
 Row 182 → 1D, 4C, 1D, 2C, 1D, 1C  
 Row 183 ← 3C, 1D, 1C, 2D, 1C, 1D, 1C  
 Row 184 → 9C, 1D  
 Row 185 ← 7C, 1D, 1C, 1D  
 Row 186 → 4C, 1D, 3C, 1D, 1C  
 Row 187 ← 10C  
 Row 188 → 1C, 1D, 4C, 1D, 2C, 1D  
 Row 189 ← 10C  
 Row 190 → 1D, 6C, 1D, 2C  
 Row 191 ← 10C  
 Row 192 → 10C  
 Row 193 ← 10C

Row 194 → 10C  
Row 195 ← 10C  
Row 196 → 10C  
Row 197 ← 10C  
Row 198 → 10C

Crafty Bead 