

# The Heart of the Ocean



# Materials list

- 5 gr Delica 11/0 Duracoat Galvanized Silver (DB1831)
- 10 gr Rocaille 11/0 Duracoat Galvanized Silver (4201)
- 5 gr Rocaille 15/0 Duracoat Galvanized Silver (4201)
- 2 gr Rocaille 15/0 Dyed Silv. Lin. Blue Zircon (1425)
- 6 Bicones Swarovski 3mm(5328) Aquamarine
- 1 Bicone Swa 4 mm (5328) Aquamarine
- 40 Gem Duo, 2-Hole Diamond Shaped Beads 8x5mm Blacklit Petrol
- 1 Heart Swarovski 28 mm Crystal Bermuda Blue (6828)
- 10 Chaton Swarovski SS39 Crystal Laguna DeLite (1088)
- 3 Rivoli 14 mm Crystal Laguna DeLite (1122)
- 1 Rivoli 12 mm Crystal Laguna De Lite (1122)
- 111 Firepolished beads 3 mm Teal Vitrail

# Heart setting

- 1-Work 31 units in RAW with 11/0 seed beads
- 2- Close the band in a circle with the 32nd module, at the end exit from a rocaille vertically



3- Work peyote with the delica, starting by inserting 1 delica three times, 1 3mm bicone, 1 delica five times, 1 3mm bicone, 1 delica five times, 1 3mm bicone, 1 delica three times, 1 3mm bicone, 1 delica five times, 1 3mm bicone, 1 delica 5 times, 1 3mm bicone (photo 4)

4- Go to the next delica before the bicone, go through a bicone and a delica without entering anything, go ahead to the delicacy before the next bicone, repeat five more times



3



4



5



6

Photos 5-8 show the details of the work

5- Pass through the 11/0 seed bead of the first round before the bicone, insert 3 15/0 seed beads and enter the seed bead after the bicone.

Go through the 11/0 seed bead before the next bicone. Insert 3 15/0 seed beads and insert the 11/0 seed bead after the bicone. Repeat this step five more times. We thus worked the front part of the work.

Now let's get to work on the back (Photos 9 and 10)





### Processing details

Insert the heart as shown in photos 13 and 14

6-Exit from a side 11/0 seed bead, insert 1 delica in each space for the whole round



7- Work peyote by inserting 1 seed beads 15/0 all around (photo 15)

8- Make a second peyote round with the 15/0 seed beads, at the top, near the inner curve of the heart, insert 2 15/0 seed beads together and enter the next 15/0 seed bead, pull the thread well

At the end of the round, go to the center of the two 15/0 seed beads that we inserted together at the top.



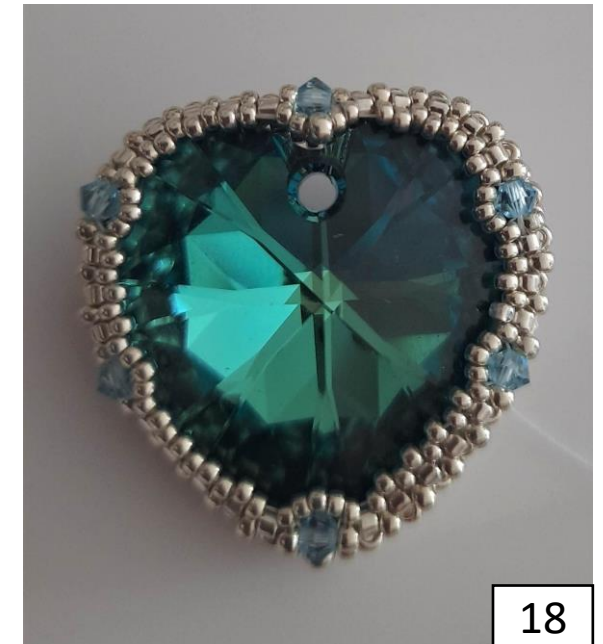
15



16



17



18

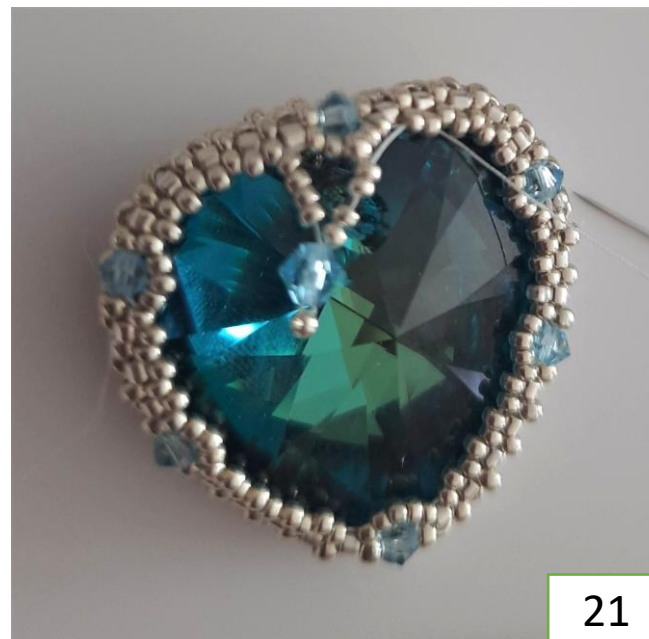
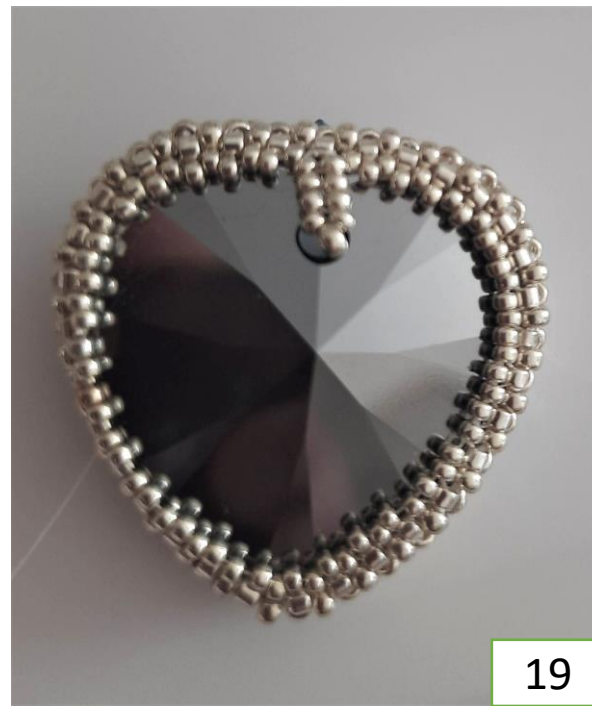
9-Work herringbone by inserting another three pairs of 15/0 seed beads. In the center of the last pair insert 1 15/0 seed bead (photo 19)

Enter with the needle through the hole in the heart, entering the 15/0 seed bead of the tip, then in the working and go out of the 15/0 seed bead from where the thread comes out as shown in photo n. 20

10- Insert 4 15/0 seed beads, 1 4mm bicone, 1 15/0 seed bead, re-enter the bicone, and insert 4 15/0 seed bead, enter the 15/0 on the opposite side of the heart in correspondence with the 15/0 seed bead starting point, as shown in photo 21.

Exit from the 15/0 seed bead at the tip of the bicone, go through the hole of the heart and enter the 15/0 seed bead at the tip on the back, thus we will have joined the two tips through the hole in the heart.

The 4 bicone on the front will cover the hole.



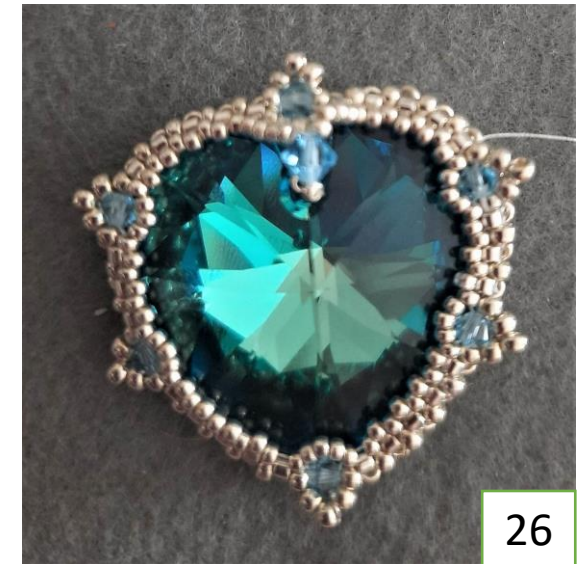


11- Exit from a 15/0 seed bead before the 3 mm bicone at the top (photo 23)

Insert 3 11/0 seed beads and re-enter the 15/0 seed beads after the bicone.

Working on the back, exit the 15/0 seed bead in correspondence to the one we just came from, and insert 1 11/0 seed bead enter the 11/0 seed bead of the tip inserted on the bicone, insert 1 11/0 seed bead and enter the 15 seed bead /0 next (photo nr 28-30)

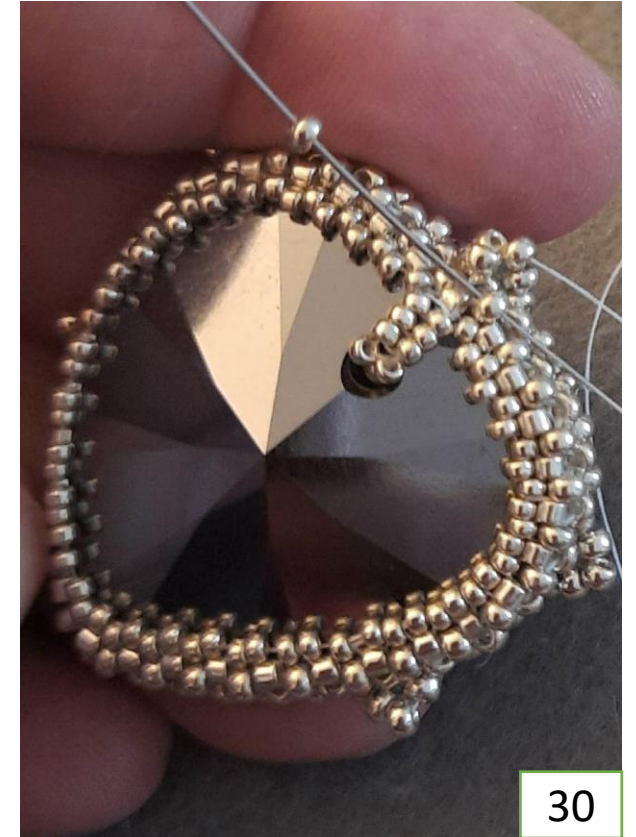
We will thus have made a tip (photo 31)



Processing details

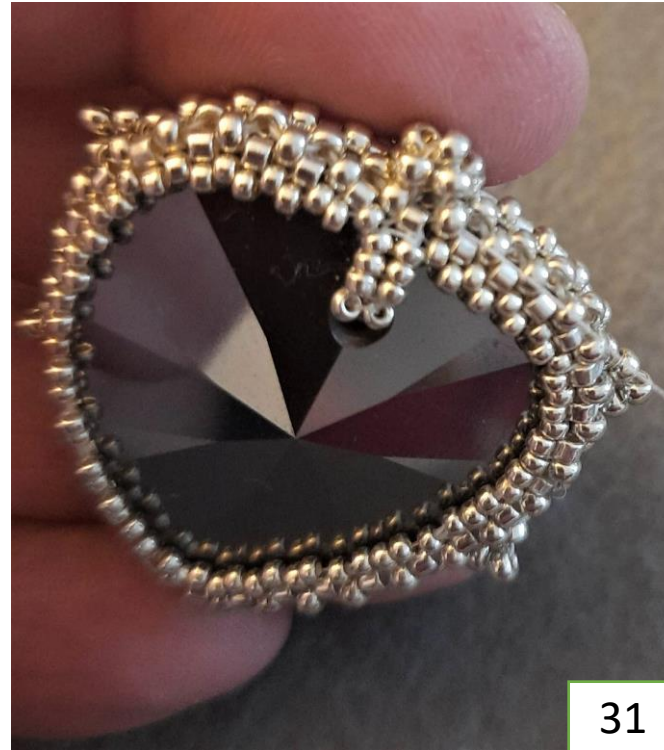


Processing details





12-We have finished with setting of the heart, now stop the thread in the process



31



32

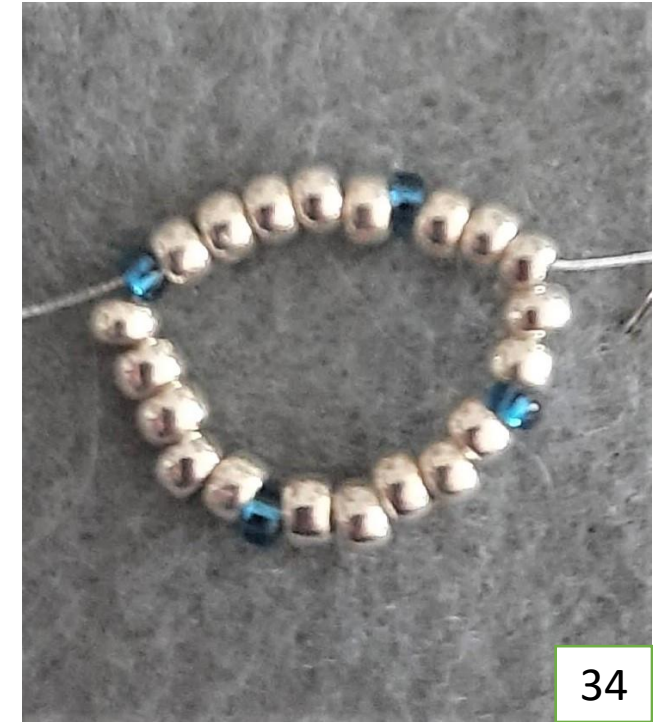


## 14 mm Rivoli setting

13 -Insert in sequence 5 11/0 seed beads and a 15/0 blue zircon seed bead 4 times and close in a circle.

When finished, exit the central 11/0 seed bead

14-Insert 3 11/0 seed beads, 1 firepolished bead, 3 11/0 seed beads and enter the central 11/0 seed bead of the next group, repeat three more times

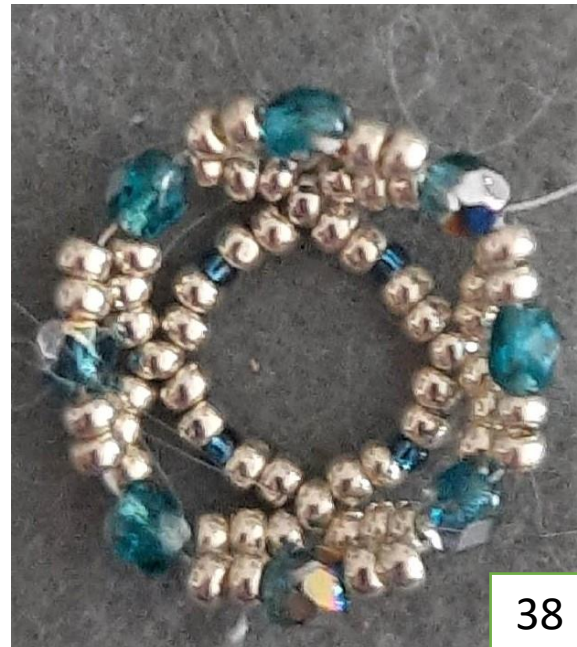


At the end of this step, exit from one firepolished bead (photo 37)

Insert 2 11/0 seed beads, 1 firepolished bead, 2 11/0 seed beads and enter the next firepolished bead.

Repeat for the entire round

At the end, exit the second seed bead before the firepolished just inserted (photo 39)





15-Insert 3 15/0 seed beads and enter the two 11/0 seed beads after the firepolished

Repeat for the entire round

At the end, exit from the first 11/0 seed bead after the firepolished bead, see photos 41 and 42

Photo 43 (shows a detail of the back of the work)



16- Insert 2 15/0 seed beads and insert the second seed bead after the firepolished bead, as shown in photo 43

Repeat for all other corners

At the end, get out of the 11/0 seed bead after the firepolished bead which is in a corner, photo 45

17-Insert 1 11/0 seed bead and insert into the next firepolished bead, insert 1 11/0 seed bead and insert into the 11/0 seed bead, into the firepolished bead and into the 11/0 seed bead, repeat the sequence as shown in photo nr 46

At the end, exit from one of the 11/0 seed bead before the firepolished bead, just inserted (photo 47)





18-Insert 3 11/0 seed beads and enter the 11/0 seed bead after the firepolished bead, entering the following beads.

Repeat this step for all corners as shown in photos 49 and 50



48



49



50

19-Make another two elements like the previous one, until you get three set streams.

We will now proceed with the assembly of these elements at the heart

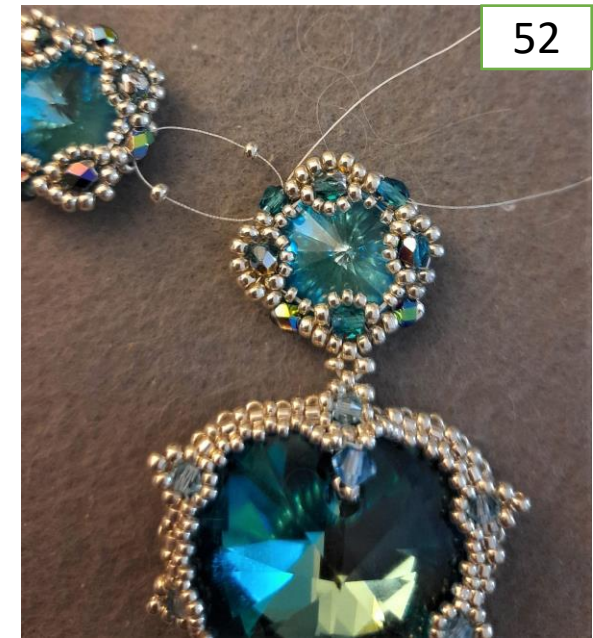
20-As shown in photo 51, exit from the the 11/0 seed bead of the tip of the heart, insert 1 11/0 seed bead, enter the 11/0 seed bead of the tip of the rivoli, insert 1 11/0 seed bead and enter a circle in the 11 seed bead /0 base of the tip of the heart.

21-Exit from a lateral firepolished beads of the rivoli (photo 52), insert 1 11/0 seed bead, enter the firepolished bead of the second set element, insert 1 11/0 seed bead and re-enter the base 11/0 seed bead in a circle

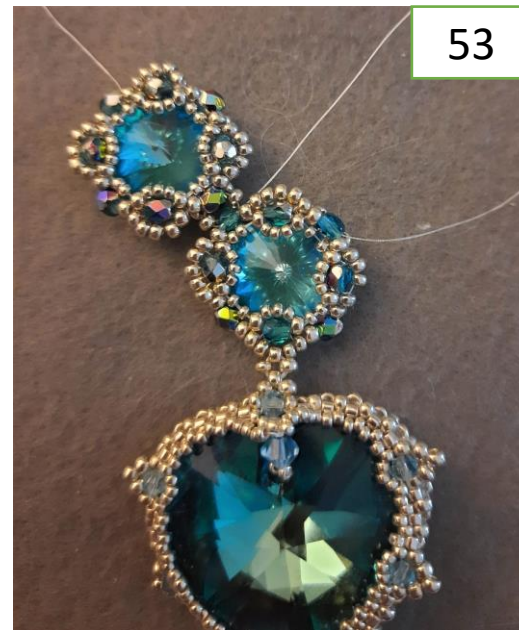
Repeat this step also joining the third rivoli from the opposite side, in photo 54 you can see the final result



51



52



53



54



## Embedding chatons

22-Now set the 10 chatons

Insert 3 11/0 seed beads and 1 15/0 blue zircon seed beads in sequence 4 times and close in a circle, going over all the beads, leaving the 15/0 blue seed beads

23-Insert 2 11/0 seed beads, 1 firepolished bead, 2 11/0 seed beads and insert the 15/0 blue seed bead

Repeat the sequence three more times and exit from the firepolished bead as shown in photo 58



24-Insert 3 15/0 seed beads and enter the next firepolished bead, repeat the sequence for all three other sides, as shown in photos 61 and 62

25-Insert the chaton and pull the thread well





26-Exit with the needle in the first of the three 15/0 seed beads inserted in the previous round, skip the central seed bead and enter the third seed bead tightening the work, repeat this step throughout the round to reinforce the work and keep the chaton tight in processing

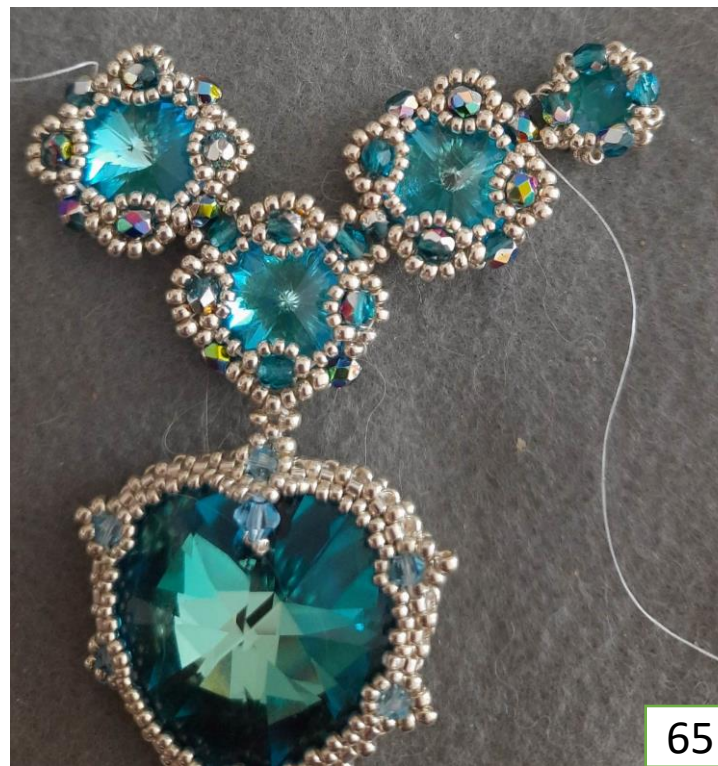
27-Exit from a lateral firepolished bead of the 14 rivoli, insert 1 11/0 seed bead, enter the firepolished bead of the chaton, insert 1 11/0 seed bead and close in a circle returning to the base firepolished bead



28-Proceed in the same way by joining 5 chatons on each side, adding as previously 1 seed bead 11/0 between the two firepolished beads to be joined

29- Exit from from the tip of the central rivoli, insert 1 seed bead 11/0, enter the seed bead of the tip of the heart, insert 1 seed bead 11/0 and close in a circle, going over a couple of times to reinforce the work.

In photo 66 the final result is shown



65



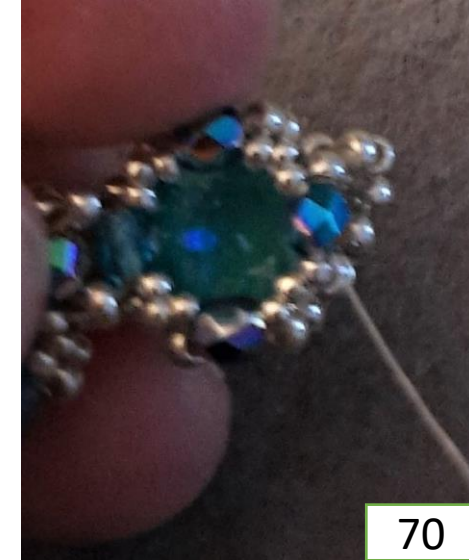
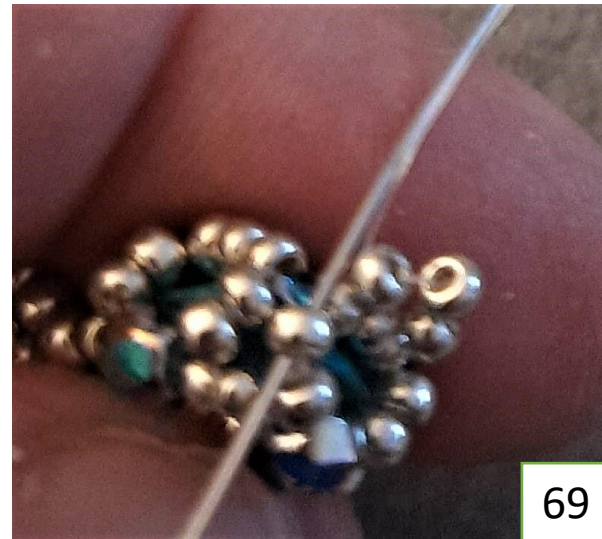
66



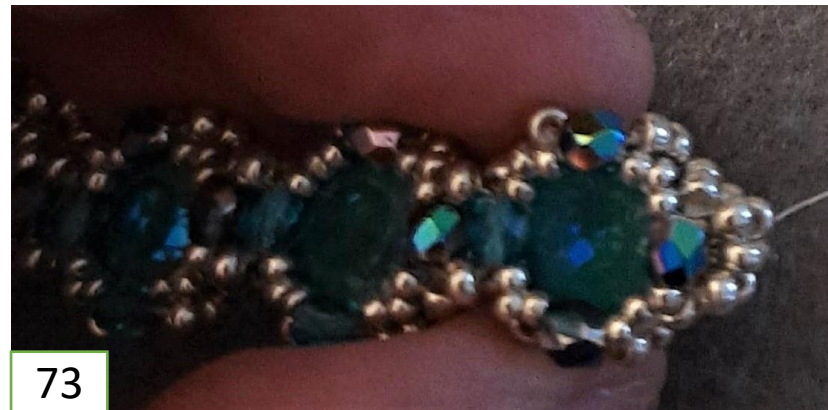
30- We must now create a base for CRAW processing on the sides of the external chatons

31-As shown in photo 67, exit from the central 11/0 seed bead, on the back of the work, insert 3 11/0 seed beads, enter the side seed bead as shown in photo 69 and insert 2 11/0 seed beads, according to the CRAW working , enter the firepolished bead, insert 2 11/0 seed beads, always according to the CRAW working, and finally on the side inserting only 1 11/0 seed beads joining the beads on both sides, according to the CRAW working.

Photos from 67 to 73



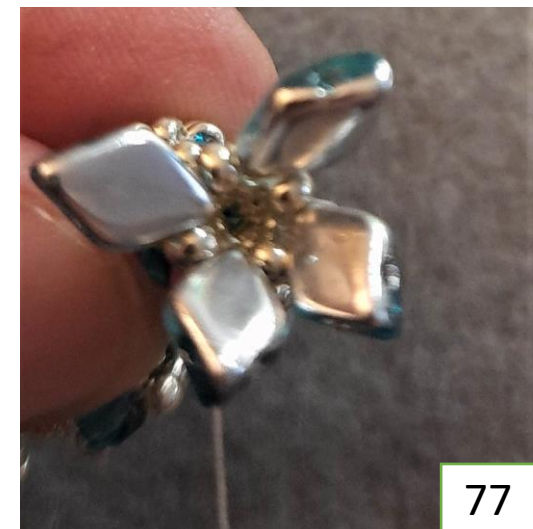
Photos of the processing details





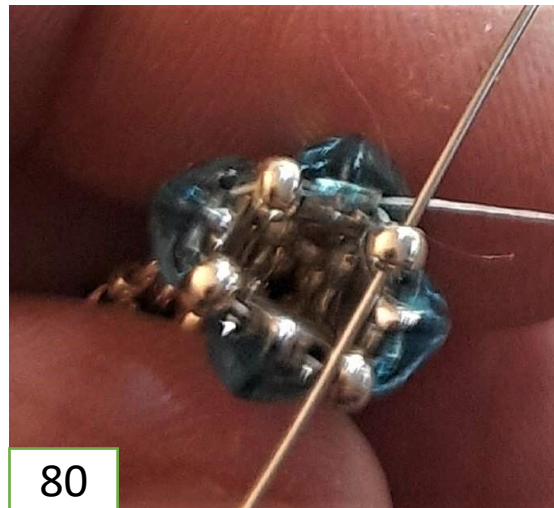
We will thus have obtained the first CRAW module(photos 74 and 75)

32-Exit one of the 4 seed beads and insert 1 GemDuo (photos 76 and 77 ) between them



33-Exit from a hole at the top of the GemDuo and insert 1 11/0 seed bead between all 4 GemDuos. Photo 79

34-Insert the needle only into the 4 seed beads as soon as you insert and pull the thread well, photos 80 and 81





### 35-Make 1 CRAW module

At the end, exit from one of the 4 seed beads above

36-Insert 1 firepolished bead, 1 11/0 seed beads and 1 firepolished bead closing in a circle in the base 11/0 seed bead, enter the base seed bead next to it and insert 1 firepolished bead, 1 11/0 seed beads and enter the firepolished bead next to it and into the seed bead following the CRAW process, continue in this way also for the next basic seed bead, while for the last basic seed bead we will insert only 1 11/0 seed bead between the two firepolished beads (photos from 83 to 86)



37-Exit from one of the 4 basic seed bead,  
repeat the sequence of the modules:

- 1 Crawl module

- 1 module with the Gemduo

- 1 CRAW module1 module with firepolished  
beads (CRAW processing)

We have to obtain a total of 5 modules on  
each side with the GemDuos and 5 modules  
with the firepolished beads, interspersed  
with 1 CRAW module(Photo 89)





38-Detail of the machining up to this point

39-At this point on both sides, work according to the CRAW method using only the 11/0 seed beads until you reach the desired length

(For this necklace I made 22 CRAW modules on each side)



90



91

## 12 mm rivoli setting

40-Set the 12 mm rivoli, inserting on the wire, in sequence, 4 11/0 seed beads, 1 15/0 blue seed bead 4 times and close in a circle exit from one 15/0 blue seed bead.

41-Insert 4 11/0 seed beads, 1 firepolished bead, 4 11/0 seed beads and enter the next 15/0 seed bead, repeat the sequence for the whole round, at the end, get out of one firepolished bead (photo 95)

42-Insert 5 15/0 silver seed beads and enter the next firepolished bead, repeat for the whole round, insert the rivoli in the centre.

To block the rivoli, exit from the second 15/0 seed bead, skip the central one and enter the next two 15/0 seed beads, tightening the work (photo 97)

43-Go to the back of the work, as shown in photo 98, insert 1 11/0 seed bead in the center between the 4 base seed beads

Repeat this step three more times and re-enter all 4 seed beads just inserted, tightening the working well.



92



93



94



95



96



97



98



99



44-Exit from one of the 4 seed beads, insert 1 11/0 seed bead and enter the opposite 11/0 seed bead, as shown in photo nr 100

Exit from this new seed bead, insert 3 11/0 seed beads and enter a circle in the base seed bead as shown in photos 102-103

45-Exit the central seed bead of the group of three just inserted and sew it to the CRAW band of the necklace by sewing it between two base seed bead of the necklace, at the end, the processing will be as shown in photo 103



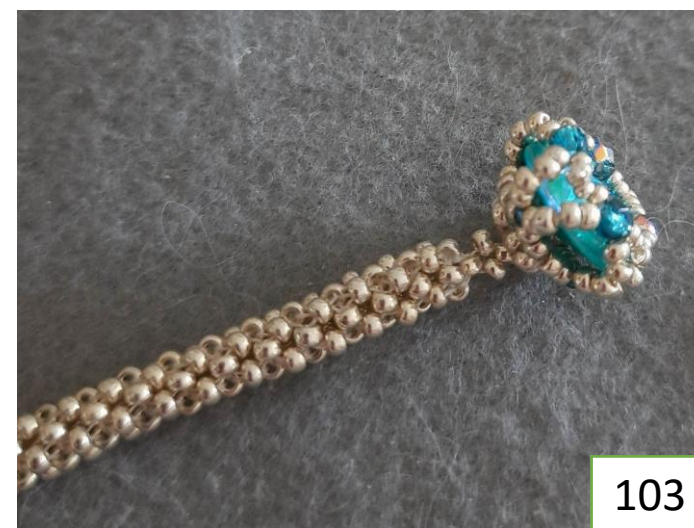
100



101



102



103



In photos 104 and 105, details of the work

46-On the second CRAW band of the necklace, create the button hole for the closure.

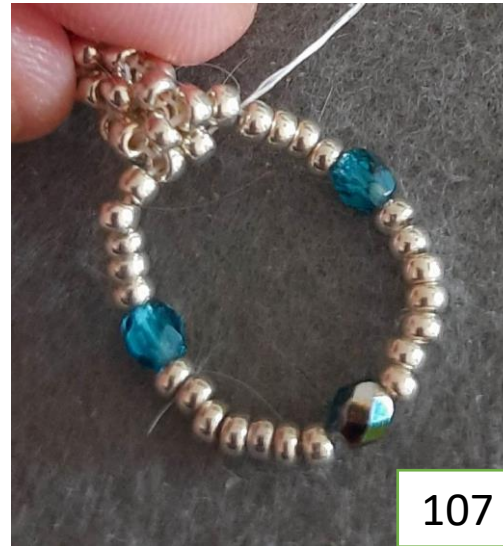
Insert in sequence 5 11/0 seed beads, 1 firepolished bead, 7 11/0 seed beads, 1 firepolished bead, 7 11/0 seed beads, 1 firepolished bead, 5 11/0 seed beads and sew entering the base seed bead opposite to the one we started from, re-enter all the beads and re-enter the starting 11/0 seed bead to reinforce the work

Go through all the beads one more time and secure the thread



This is how the closure machining looks like  
at the end of these steps.

The necklace is so finished!







Enjoy!  
The Heart of the Ocean 2023  
Copyright by Lia Dipaola

