

# Tudor Rose Earrings



Celebrate International Beading Week! Create dainty bead embroidered floral components, perfect as earrings!

Designed by Chloe Menage  
Level: Beginner

*Pinkhot*  
JEWELLERY

# Tudor Rose Earrings



Designed by Chloe Menage  
Level: Beginner

Free pattern for International Beading Week 2022.

Celebrate IBW's theme of Flowers of the World and create these fun little floral components reminiscent of a Tudor Rose - the national flower for my home country England!

This project is a great introduction to bead embroidery and perfect for using up scraps of beading foundation, as you only need a very small piece. The components make brilliant statement stud earrings, rings, or could even be joined together for lightweight bracelets or necklaces.



## REQUIREMENTS

Per component:

- ★ 5 x 8x7mm Czech Glass Rose Petal beads
- ★ 5 x Dragonscale beads
- ★ 1 x 6mm round glass bead / druk
- ★ Approx. 1g x size 15 Miyuki seed beads
- ★ Beading foundation
- ★ Ultrasuede
- ★ Earring posts or findings to finish

## TOOLS & THREAD

- ★ Synthetic wax
- ★ Toning beading thread
- ★ 1 x size 10 or 12 beading needle
- ★ Small sharp scissors
- ★ Fabric glue
- ★ Large needle or awl

## TIPS & TECHNIQUES

- ★ Experiment with colours - opaque or metallic beads work best against strong-coloured or vibrant backgrounds.
- ★ There are several types of beading foundation on the market - I used Misan's Wonder beading foundation from Sweden (it's hard to get hold of now!) - but I also really like using Nicole's Bead Backing, which comes in some glorious colours! There is also Lacy's Stiff Stuff and BeadSmith Beading Foundation available.

**LET'S GET STARTED!**

1. Cut a small amount of beading foundation - around 2.5cm x 2.5cm. It doesn't need to be a neat shape, as we will trim it later - it just needs to be enough for you to have around 2cm<sup>2</sup> to work with.

On a length of beading thread tie a knot securely in one end and thread your needle on the other end. Pass up through the beading foundation, roughly in the centre.

Pick up a 6mm bead, push it snug to the fabric, then pass back down into the fabric as close to the bead as you can manage. Reinforce the thread path once more. See Photo 1.



Photo 1.

2. Exit from the foundation approx. 2mm away from the bead. Pick up a rose petal bead (cupped side facing up) - see Photo 2.

Pick up 1 x size 15 bead and pass back down through the petal bead and into the foundation.

Judging the space needed (you can place the loose petal beads around the central bead to help you with spacing) add a second petal in the same way.

Repeat this step to add a total of 5 petals around the central bead. They may be a little spaced apart at this point but we will tidy them up in later steps. See Photo 3.



Photo 2.



Photo 3.

3. Using the same method as in Step 2, add a dragonscale bead between each of the rose petals, using a size 15 bead to secure it in place. These may look a bit loose and wobble at this point but don't worry.



Photo 4.



- Exit through a rose petal bead and pass through the size 15. \*Pick up 3 x size 15s and pass through the size 15 bead in the next rose petal around. See Photo 5.

Repeat from \* around to join all of the rose petal beads via their size 15s.

Reinforce by passing through all of the new beads and the existing size 15s once more, pulling snug to keep a tight tension and draw the beads in.



Photo 5.

- Pass through to exit from one of the original size 15 beads anchoring a petal. Pick up 2 x size 15s. Skipping the next bead in the round, pass through the next 3 x size 15s. See Photo 6.

Repeat this around to add a total of 5 x sets of 2 beads. These will sit above the ring of beads. See Photo 7. Keep your working thread attached if it is of a good length.



Photo 6.



Photo 7.

- Using small, sharp scissors, trim the beading foundation into a circle. You can draw around something like a coin on the back of the foundation if you wish, to help you get a neater circle - or you can just do it by eye.

You want to aim for a tight trim, getting in snug to the outermost stitches, without cutting through them! See Photo 8. The neater you get this circle, the neater your finished bead edging will be.



Photo 8.

- Place the component on to the Ultrasuede and draw around it. Then cut the Ultrasuede to size.
- To make earrings, make a second component following Steps 1-7. Then glue earring posts to the back of the fabric. You can either glue them in the centre or slightly towards the top depending on how you want the earrings to sit when worn.



Photo 9.

- 9.** Line up the earring post with the Ultrasuede and use a large needle or awl to piece a hole in the Ultrasuede where the post will sit.

Add a small amount of glue to the remaining areas of the foundation. Slide the Ultrasuede down the post and press it firmly in place.



Photo 10.

- 10.** Using your working thread - or attaching a new thread using the same method as per Step 1 - pass through the beading foundation to exit upwards approx. 1mm from the edge. See Photo 11.

Pick up 2 x size 15 seed beads. Pass into the Ultrasuede and the foundation approx. 2-3mm along. Pass back into the second bead added - working towards the first bead. See Photo 12.

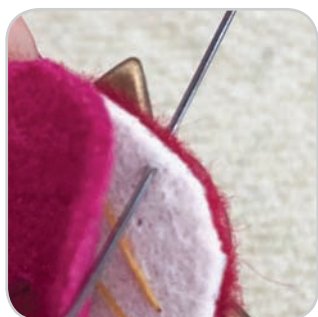


Photo 11.



Photo 12.

- 11.** Pick up 1 x seed bead, pass into the foundation and through the Ultrasuede. See Photo 13.

\*Pass back through the seed bead (brick stitch). See Photo 14. Repeat this step from \* around the edge.

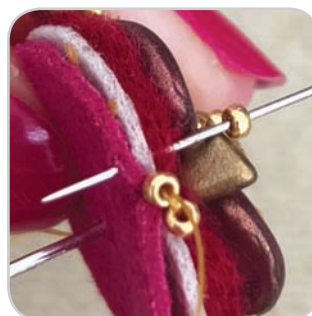


Photo 13.



Photo 14.

- 12.** When you reach the beginning, pass down into the first bead, (see Photo 15) through the foundation/ Ultrasuede and back up through the bead to secure.

Weave in your thread by passing through several of the edge beads, create a half hitch knot around a thread, pass through a few more beads and trim your thread.

*Half hitch knot: Pass under threadpath (see Photo 16), pull thread through until you have a small loop. Take your needle through the loop, then pull the thread snug to close the loop.*

Repeat Steps 9-12 for the second component to complete your earrings.



Photo 15.

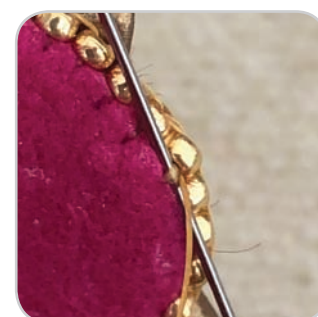


Photo 16.

## VARIATIONS

- ★ It's easy to make a pendant, you can add a backing using the same technique in Steps 10-12. Then stitch a loop of beads or a split ring to one of the beads in the edging - see green/turquoise sample.
- ★ Why not get creative and experiment by joining components together to create a bracelet? Or see where the process takes you!
- ★ Go big! Try using the large 14x13mm Rose Petals with DiamondDuo or GemDuo beads and size 11 seed beads - see red sample.



## CHLOE MENAGE

Chloe has a passion for weaving intricate beaded creations. She has been designing and teaching for more than 10 years and sells her beading patterns through her brand Pinkhot Jewellery.

Chloe teaches her colourful designs and patterns virtually online and at craft shops and arts venues around the UK.

**Tudor Rose design and instructions**  
© Chloe Menage/Pinkhot Jewellery 2022.

A lot of time and effort goes into creating these designs, so whilst I am happy for you to sell any items you make using this tutorial, I do ask that you credit me as the designer. However I kindly ask that you do not copy, teach or share my pattern.

For more patterns, kits and workshop dates visit [www.pinkhot.co.uk](http://www.pinkhot.co.uk).

For information, help or advice with this tutorial you can email me on [info@pinkhot.co.uk](mailto:info@pinkhot.co.uk)



Get social! Follow me on social media:







**YOU MIGHT ALSO LIKE...**



**PETAL  
POWER  
RING**



**TOTAL ECLIPSE**

For more patterns  
and kits please visit  
my website:  
[www.pinkhot.co.uk](http://www.pinkhot.co.uk)

## Designed by Chloe Menage

### Level: Beginner

A free pattern for International Beading Week 2022.

Celebrate IBW's theme of Flowers of the World and create these fun little floral components reminiscent of a Tudor Rose - the national flower of England!

This project is a great introduction to bead embroidery and the components make brilliant statement stud earrings, rings, or can even be joined together for lightweight bracelets or necklaces.

## YOU WILL NEED

- ★ 8x7mm Czech Glass Rose Petal beads
- ★ Dragonscale beads
- ★ 6mm round glass bead / druk
- ★ Size 15 Miyuki seed beads
- ★ Beading foundation
- ★ Ultrasuede
- ★ Earring posts or findings to finish



Pinkhot Jewellery by Chloe Menage - Chloe is a UK-based designer and maker of intricate beaded jewellery. She teaches her colourful designs virtually and at craft shops and arts venues around the UK. For more beading patterns, kits and workshop dates visit [www.pinkhot.co.uk](http://www.pinkhot.co.uk)

Tudor Rose design and instructions © Chloe Menage/Pinkhot 2022.