

SuperDuo Ruffle Rivoli Flower



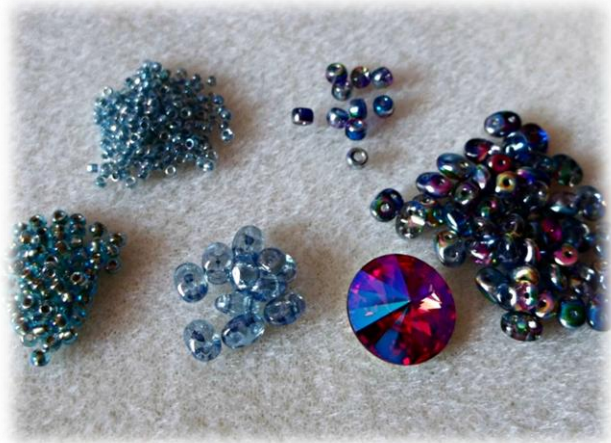
- Please do not copy or teach this tutorial without permission from the author.
- You can sell designs created from this tutorial but no mass production.
- Please credit 'Jenny Argyle' if you post pictures of your work on the internet.
- Project level intermediate – knowledge of joining new threads assumed.
- For any pattern queries I can be contacted via Etsy convo

www.etsy.com/uk/shop/KeithAgnesDesigns



Ingredients

14 mm rivoli
10 Transparent Super duos (TSD)
43 Magic Super duos (MSD)
10 size 7 Magic Matubo beads
1g size 11 seed beads (S11)
1g size 15 seed beads (S15)
1.5 metres fireline – 4/6 lb
Size 12 beading needle



1. Add a beading needle to one end of the 1.5 metres of fireline. Add a Transparent Super Duo (TSD) and a size 7 seed bead (10 times)



2. Leaving a tail thread of about 15 cm – form a circle by passing again through all the beads loaded in step 1 in the same direction. Then pass through a few more to exit a TSD to secure the round.



3. Ensure working thread is exiting a TSD – step up by passing through the second hole in the opposite direction. Add a size 11 (S11) seed bead and pass through the next TSD (10 times).



4. Circle again through all beads added in step 3 and a few more – ensure exiting a TSD then step down to initial row – pass through a TSD and exit a size 7 seed bead.



5. Using peyote stitch - add a Magic Super Duo (MSD) then pass through the next size 7 seed bead (10 times). Then pass through the first MSD added in this round and step up.



6. Add a S11 and pass through the next MSD (10 times). Place rivoli upside down inside the cage formed. Hold rivoli in place and circle again through beads added in this step to close up circle on rear of rivoli.



Super Duos may need some encouragement to flatten against the rear.

7. Then use a Super Duo to step back up to initial round – circle through to tighten – use a square knot to join working and tail thread.
8. Using a Super Duo return to base and pass through to a size 11 seed bead with space to exit. *Ensure size 11 seed bead on opposite side has space to enter.* Add a S11, MSD, S11, MSD, S11, MSD, and S11.
9. To complete bail – pass through S11 on opposite side – add S11 – pass through MSD (3 times). Add a S11.
10. Pass back through the S11 exited in step 8. Then circle around - beads added in step 6 - to tighten up rear of cage. Step back up to initial round using a super duo – ensure working thread is exiting a size 7 seed bead.



11. Add a S11, MSD, S11, MSD and S11 – then pass through size 7 seed bead exited in the same direction. Then pass through TSD and a size 7 seed bead. Repeat a further 9 times.



12. Pass through first S11, MSD and S11 added in step 11. **Add two size 15 seed beads (S15)**, pass through MSD, **add MSD**, pass through MSD **add two S15** and pass through S11. Repeat a further 9 times.



13. Pass through two S15, add two S15, pass through MSD, add two S15 and pass through S11 (10 times).



14. Final stage – work thread to rear of design. Half hitch knots hidden best here! Secure working and tail thread in three locations.



- Design first delivered as a workshop at the North East Bead Fair, UK, 17/5/15. The 14mm rivoli is very secure within the SuperDuo bezel – so may need some gentle encouragement.
- The tutorial 'Twinkle & Twins' (2014) provides detailed steps of how to approach the 8mm and 12mm rivoli.

