



Designed by Réj

Email:perlesdartistans@gmail.com

"GEO A"





FREE VERSION FOR IBW 2022 - PLEASE RESPECT COPYRIGHT

BRICK STITCH DIAMOND SHAPE PDF

"GÉO A" brick stitch diamond shape earrings

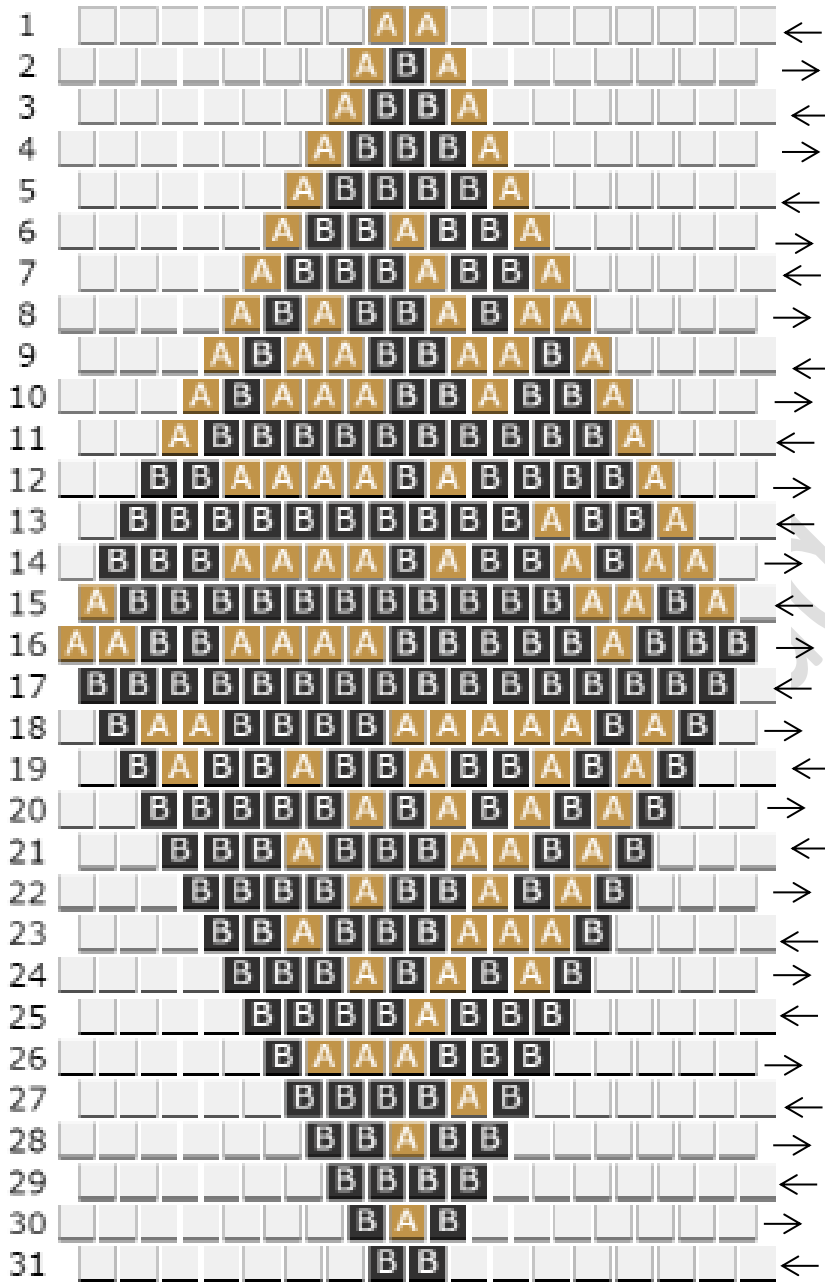


Bead List

Bead	Symbol	Count	Description
	A	100	Gold, (DB31)
	B	187	Black, (DB310)

"GÉO A" brick stitch diamond shape earrings

Pattern Diagram



Some beaders find it easier to start at the longest row & work upwards (Row 16 to row 1)

When you have completed top section, bring your thread / needle to row 16 and bead remaining rows. (Rows 17 to 31)

31 rows x 17 columns.
 287 beads.
 Project dimensions: 2.72 x 3.80 cm
 1.07 x 1.50 inches.

“GÉO A” brick stitch diamond shape earrings

Word Chart

Row 1: → 2A

Row 2: ← 1A, 1B, 1A

Row 3: → 1A, 2B, 1A

Row 4: ← 1A, 3B, 1A

Row 5: → 1A, 4B, 1A

Row 6: ← 1A, 2B, 1A, 2B, 1A

Row 7: → 1A, 3B, 1A, 2B, 1A

Row 8: ← 2A, 1B, 1A, 2B, 1A, 1B, 1A

Row 9: → 1A, 1B, 2A, 2B, 2A, 1B, 1A

Row 10: ← 1A, 2B, 1A, 2B, 3A, 1B, 1A

Row 11: → 1A, 10B, 1A

Row 12: ← 1A, 4B, 1A, 1B, 4A, 2B

Row 13: → 10B, 1A, 2B, 1A

Row 14: ← 2A, 1B, 1A, 2B, 1A, 1B, 4A, 3B

Row 15: → 1A, 11B, 2A, 1B, 1A

Row 16: ← 3B, 1A, 5B, 4A, 2B, 2A

Row 17: → 16B

Row 18: ← 1B, 1A, 1B, 5A, 4B, 2A, 1B

Row 19: → 1B, 1A, 2B, 1A, 2B, 1A, 2B, 1A, 1B, 1A, 1B

Row 20: ← 1B, 1A, 1B, 1A, 1B, 1A, 1B, 1A, 5B

Row 21: → 3B, 1A, 3B, 2A, 1B, 1A, 1B

Row 22: ← 1B, 1A, 1B, 1A, 2B, 1A, 4B

Row 23: → 2B, 1A, 3B, 3A, 1B

Row 24: ← 1B, 1A, 1B, 1A, 1B, 1A, 3B

Row 25: → 4B, 1A, 3B

Row 26: ← 3B, 3A, 1B

Row 27: → 4B, 1A, 1B

Row 28: ← 2B, 1A, 2B

Row 29: → 4B

Row 30: ← 1B, 1A, 1B

Row 31: → 2B